

MATCH LINE SEE SHEET E1.11

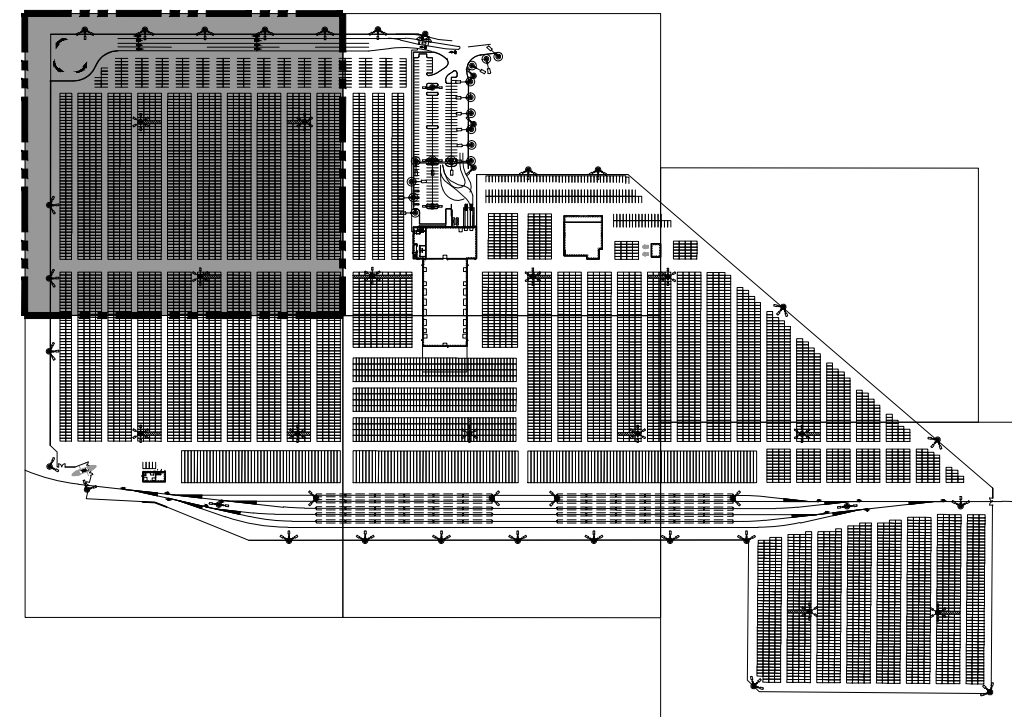
MATCH LINE SEE SHEET E1.12

GENERAL NOTES

1. INCLUDE PULL ROPE IN ALL CONDUIT.
2. ALL CONDUIT BELOW GRADE SHALL BE SCHEDULE 80 PVC UNLESS OTHERWISE NOTED.
3. REFER TO SHEET E1.23 FOR CONDUIT AND CABLE SCHEDULE.

ELECTRICAL NOTES

1. PROVIDE HANDHOLE AND POLE CONNECTION PER SHEET E1.18 DETAIL. TYPICAL ALL HANDHOLES THIS SHEET.
2. PROVIDE CONDUIT/DUCTBANK PER DUCTBANK DETAIL 2, SHEET E1.19. TYPICAL ALL DUCTBANKS THIS SHEET.



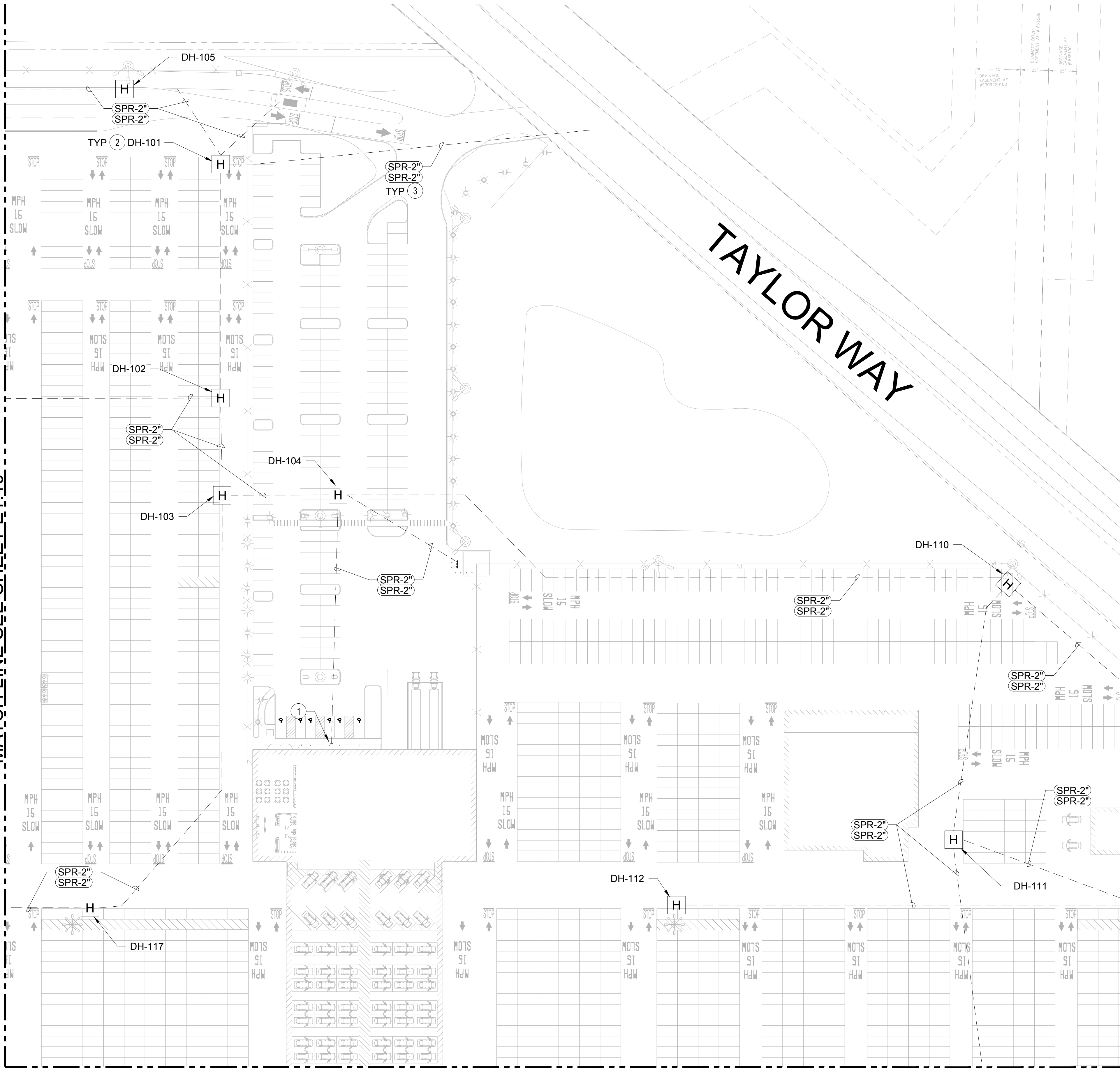
KEY PLAN
NTS



 2407 North 31st Street, Suite 100 Tacoma, Washington 98407 (253) 396-0150 Fax (253) 396-0162 P.O. BOX 1837 TACOMA, WA 98401-1837	DATE: _____ APPR: _____
	BY: _____ REVISION: _____ MARK: _____
	DCR 5/7/18 CHECKED BY DATE DKS 5/9/18 PROJ. ENGR DATE DIRECTOR ENG. DATE Jeff May 09, 2018 PRINTED BY: Jeff May 09, 2018 PORT ADDRESS: ONE SITCUM PLAZA TACOMA WA, 98401-1837
E1.10 -129- OF 163 PRELIMINARY	PARCEL 77 AUTO IMPORT TERMINAL ELECTRICAL DATA DISTRIBUTION PLAN AREA 1 TOWNSHIP: 21N RANGE: 3E SECTION: 36 DAT-HRZ: W83-SF VERT: PORT OF TACOMA BM# PARCEL: MULTIPLE DRAWING SCALE: AS SHOWN

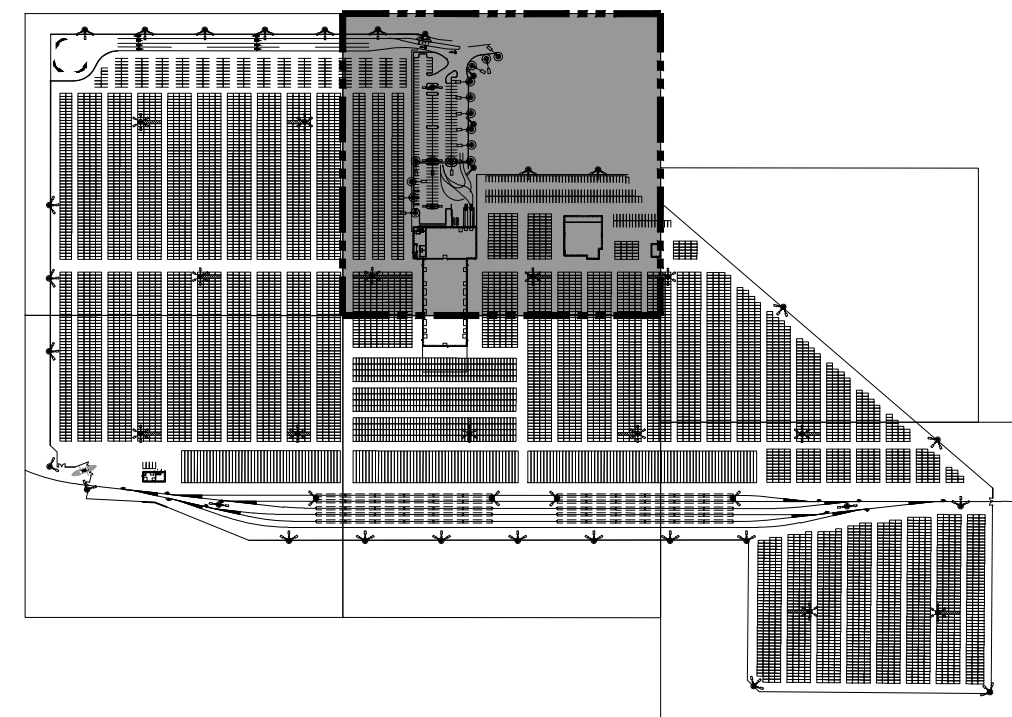
THIS DRAWING IS THE PROPERTY OF THE PORT OF TACOMA AND SHALL NOT BE USED ON OTHER WORK, DISCLOSED, COPIED, IN WHOLE OR IN PART, WITHOUT WRITTEN PERMISSION

MATCH LINE SEE SHEET E1.10



MATCH LINE SEE SHEET E1.13

MATCH LINE SEE SHEET E1.14



KEY PLAN
NTS

GENERAL NOTES

1. INCLUDE PULL ROPE IN ALL CONDUIT.
2. ALL CONDUIT BELOW GRADE SHALL BE SCHEDULE 80 PVC UNLESS OTHERWISE NOTED.
3. REFER TO SHEET E1.23 FOR CONDUIT AND CABLE SCHEDULE.

ELECTRICAL NOTES

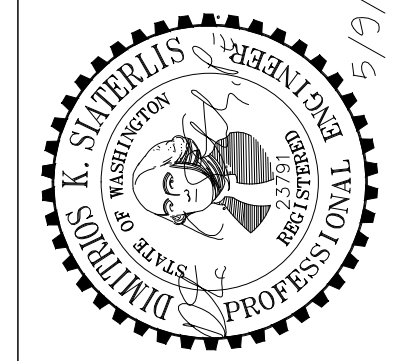
1. CAP CONDUIT 5' FROM BUILDING FOUNDATION.
2. PROVIDE HANDHOLE AND POLE CONNECTION PER SHEET E1.18 DETAIL. TYPICAL ALL HANDHOLES THIS SHEET.
3. PROVIDE CONDUIT/DUCTBANK PER DUCTBANK DETAIL 2, SHEET E1.19. TYPICAL ALL DUCTBANKS THIS SHEET.

E1.11

130 OF 163
 CONT/CONS: 070770
 TOWNSHIP: 21N RANGE: 3E SECTION: 36
 DAT-HRZ: W83-SF VERT: PORT OF TACOMA BM#
 PHASE: PRELIMINARY PARCEL: MULTIPLE DRAWING SCALE: AS SHOWN

PARCEL 77 AUTO IMPORT TERMINAL

APPROVED:	DCR	5/7/18
CHECKED BY:	DATE	
DKS	5/9/18	
DIRECTOR ENG. DATE	PROJ. ENGR	DATE
PRINTED BY: jef	May 09, 2018	
PORT ADDRESS: ONE SITCUM PLAZA TACOMA WA, 98401-1837		



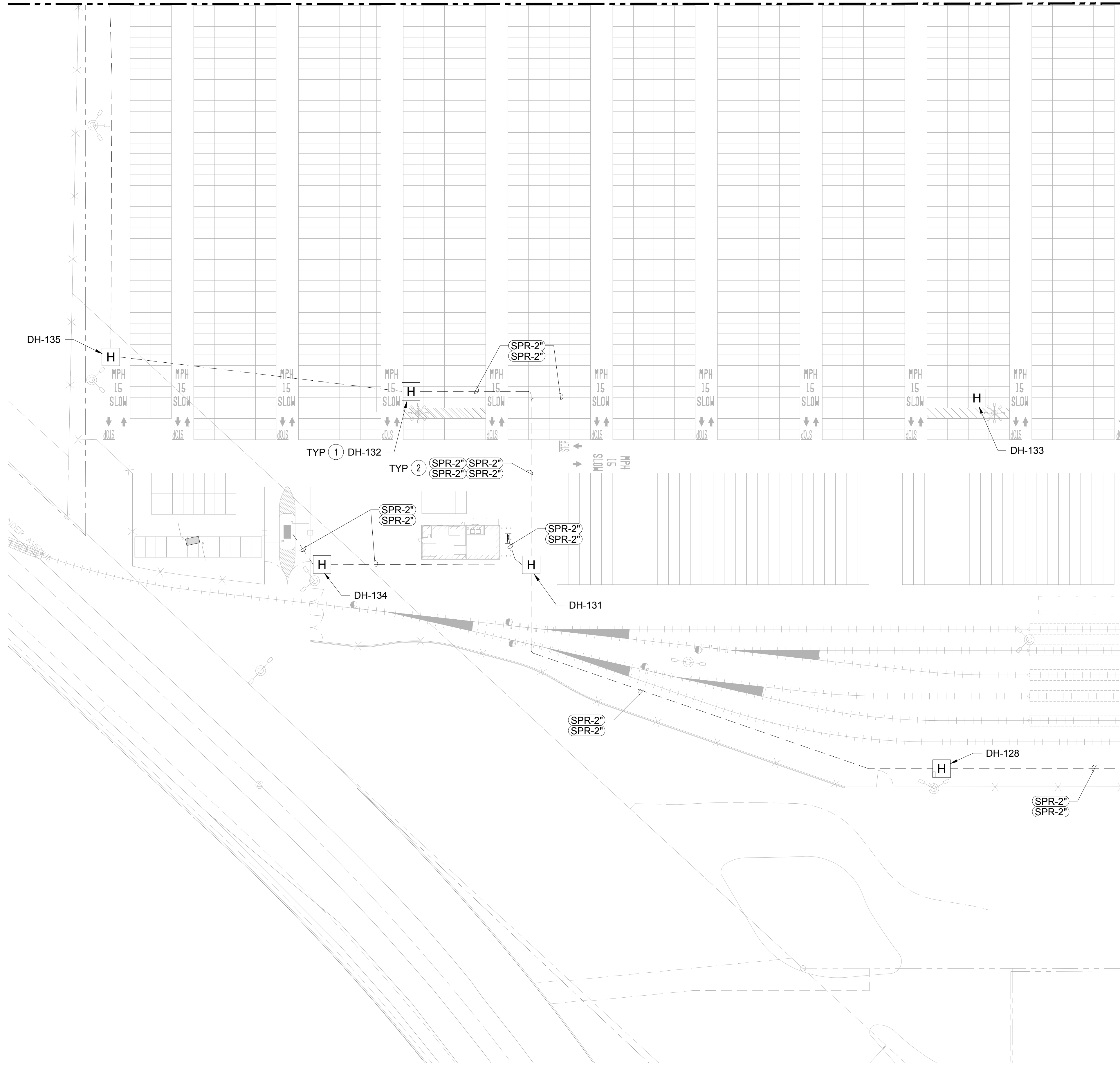
kpff
 2407 North 31st Street, Suite 100
 Tacoma, Washington 98407
 (253) 396-0150 Fax (253) 396-0162

Port of Tacoma
 P.O. BOX 1837 TACOMA, WA 98401 (253)363-3441

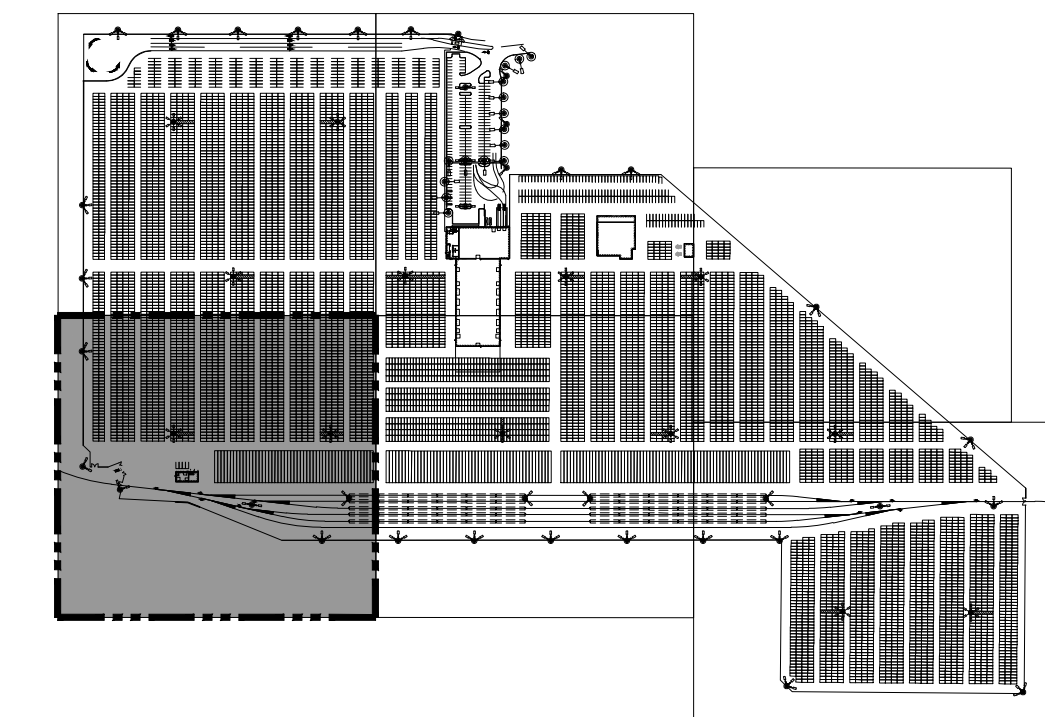
MARK:	REVISION:	BY:	DATE:

THIS DRAWING IS THE PROPERTY OF THE PORT OF TACOMA AND SHALL NOT BE USED ON OTHER WORK, DISCLOSED, COPIED, IN WHOLE OR IN PART, WITHOUT WRITTEN PERMISSION

MATCH LINE SEE SHEET E1.10



MATCH LINE SEE SHEET E1.13



KEY PLAN
NTS

GENERAL NOTES

1. INCLUDE PULL ROPE IN ALL CONDUIT.
2. ALL CONDUIT BELOW GRADE SHALL BE SCHEDULE 80 PVC UNLESS OTHERWISE NOTED.
3. REFER TO SHEET E1.23 FOR CONDUIT AND CABLE SCHEDULE.

ELECTRICAL NOTES

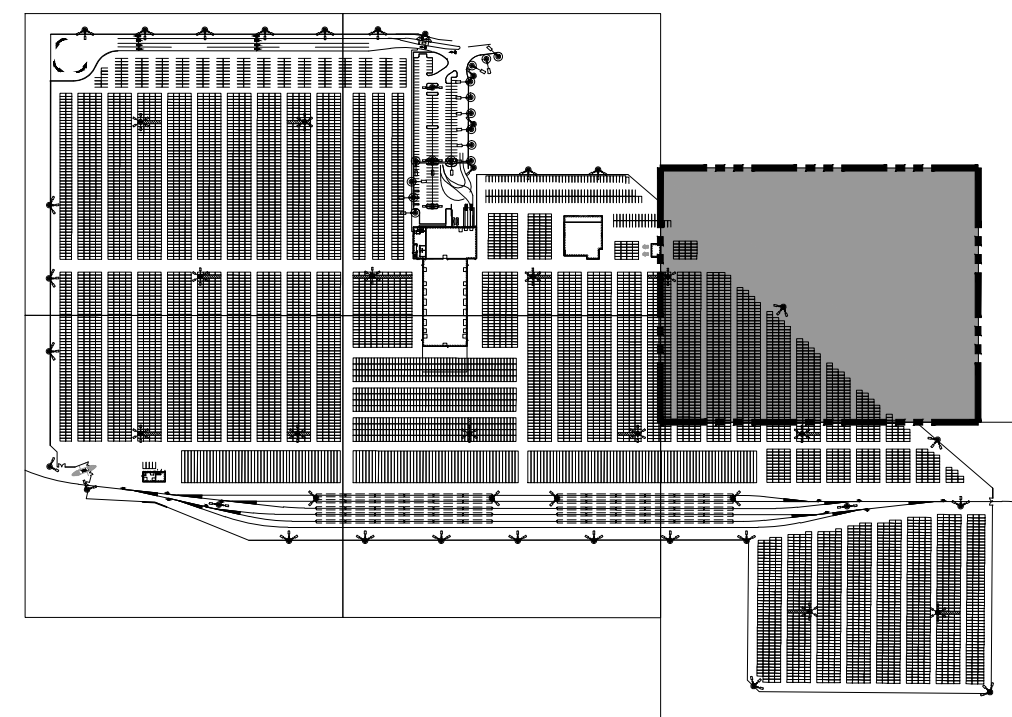
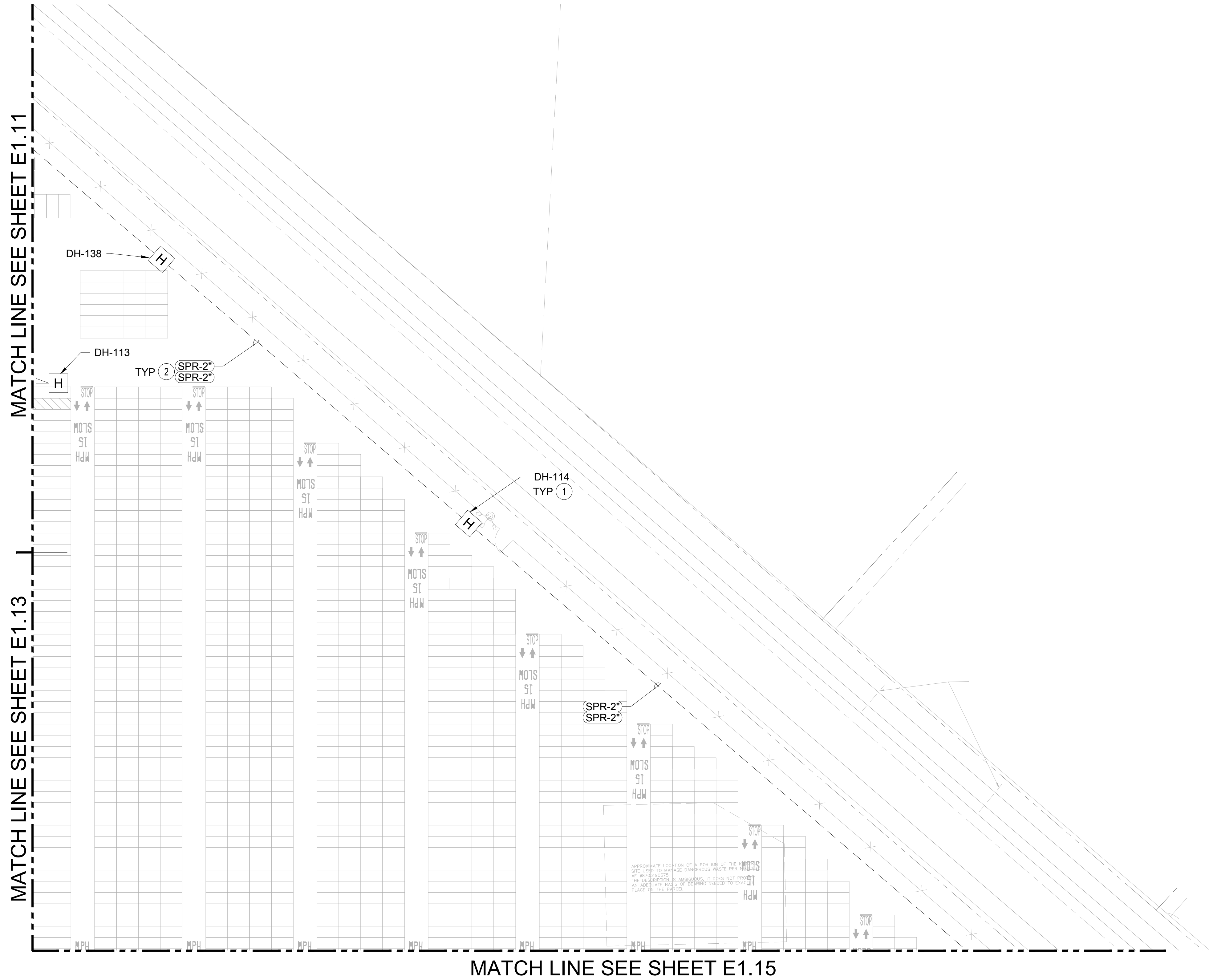
- 1 PROVIDE HANDHOLE AND POLE CONNECTION PER SHEET E1.18 DETAIL. TYPICAL ALL HANDHOLES THIS SHEET.
- 2 PROVIDE CONDUIT/DUCTBANK PER DUCTBANK DETAIL 2, SHEET E1.19. TYPICAL ALL DUCTBANKS THIS SHEET.

E1.12 -131- OF 163	PARCEL 77 AUTO IMPORT TERMINAL		DCR	5/7/18
	ELECTRICAL DATA DISTRIBUTION PLAN AREA 3		CHECKED BY	DATE
CONT/CONS: 070770	TOWNSHIP: 21N	RANGE: 3E	SECTION: 36	DIRECTOR ENG. DATE
M. ID: 201020.01	DATE-HRZ: W83-SF	VERT: PORT OF TACOMA BM#	PRINTED BY: Jeff May 09, 2018	PROJ. ENGR DATE
PHASE: PRELIMINARY	PARCEL: MULTIPLE	DRAWING SCALE: AS SHOWN	PORT ADDRESS: ONE SITCUM PLAZA TACOMA WA, 98401-1837	

Port of Tacoma
2407 North 31st Street, Suite 100
Tacoma, Washington 98407
(253) 396-0150 Fax (253) 396-0162
P.O. BOX 1837 TACOMA, WA 98401 (203)3843441

kpff
MARK: REVISION: BY: DATE: APPR: DATE:

THIS DRAWING IS THE PROPERTY OF THE PORT OF TACOMA AND SHALL NOT BE USED ON OTHER WORK, DISCLOSED, COPIED, IN WHOLE OR IN PART, WITHOUT WRITTEN PERMISSION



GENERAL NOTES

1. INCLUDE PULL ROPE IN ALL CONDUIT.
2. ALL CONDUIT BELOW GRADE SHALL BE SCHEDULE 80 PVC UNLESS OTHERWISE NOTED.
3. REFER TO SHEET E1.23 FOR CONDUIT AND CABLE SCHEDULE.

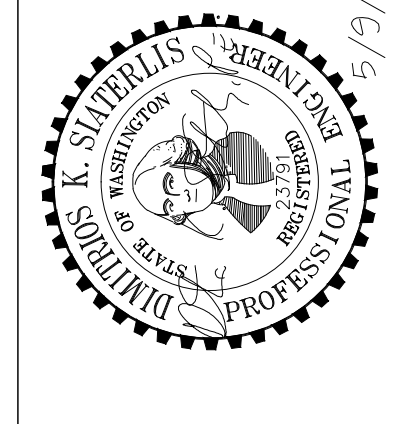
ELECTRICAL NOTES

- ① PROVIDE HANDHOLE AND POLE CONNECTION PER SHEET E1.18 DETAIL. TYPICAL ALL HANDHOLES THIS SHEET.
- ② PROVIDE CONDUIT/DUCTBANK PER DUCTBANK DETAIL 2, SHEET E1.19. TYPICAL ALL DUCTBANKS THIS SHEET.

E1.14
-133- OF 163
CONT/CONS: 070770
M. ID: 201020.01
PHASE: PRELIMINARY

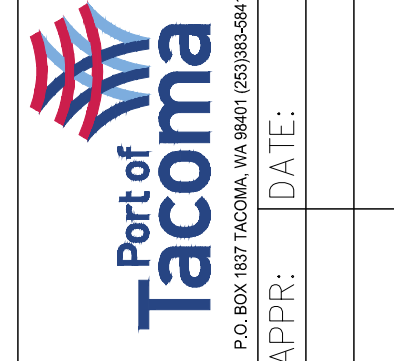
PARCEL 77 AUTO IMPORT TERMINAL
ELECTRICAL DATA DISTRIBUTION PLAN
AREA 5
TOWNSHIP: 21N RANGE: 3E SECTION: 36
DAT-HRZ: W83-SF VERT: PORT OF TACOMA BM#
PARCEL: MULTIPLE DRAWING SCALE: AS SHOWN

APPROVED:	DCR	5/7/18
CHECKED BY:	DATE	
DKS	5/9/18	
DIRECTOR ENG. DATE	PROJ. ENGR	DATE
PRINTED BY: Jeff May 09, 2018		
PORT ADDRESS: ONE SITCUM PLAZA TACOMA WA, 98401-1837		



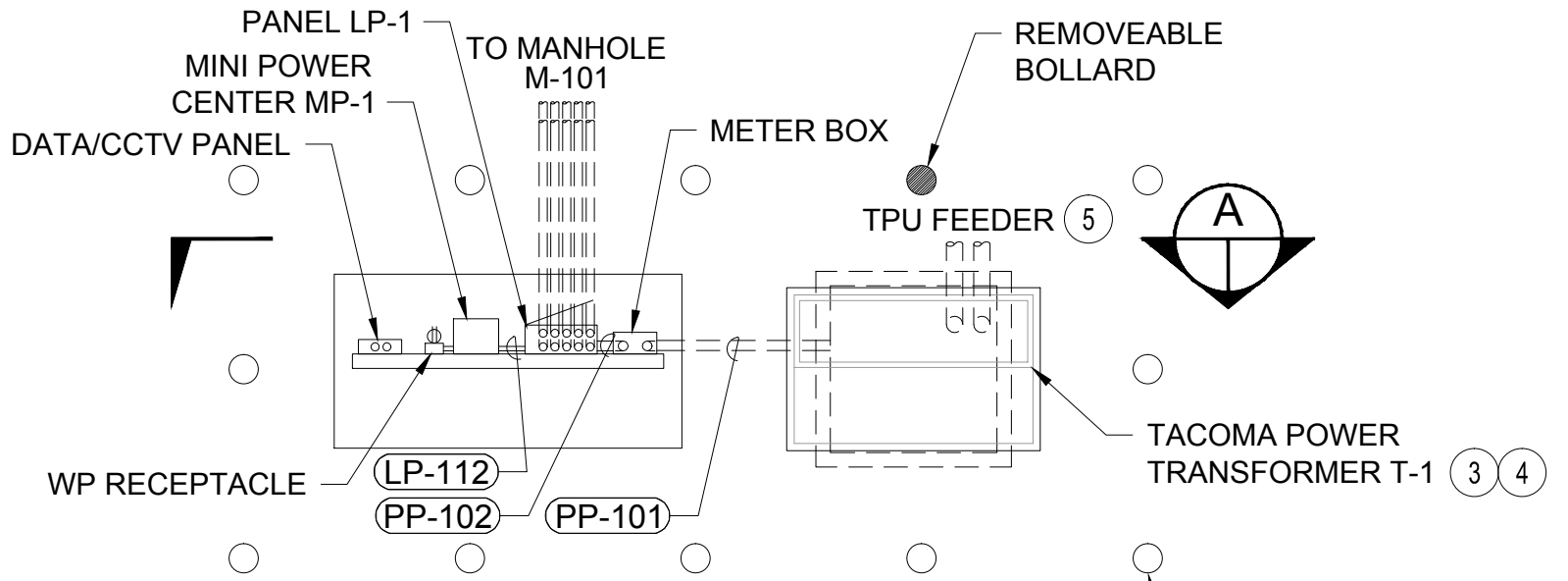
kpff
2407 North 31st Street, Suite 100
Tacoma, Washington 98407
(253) 396-0150 Fax (253) 396-0162
P.O. BOX 1837 TACOMA, WA 98401 (253)396-0441

MARK: REVISION: BY: DATE:

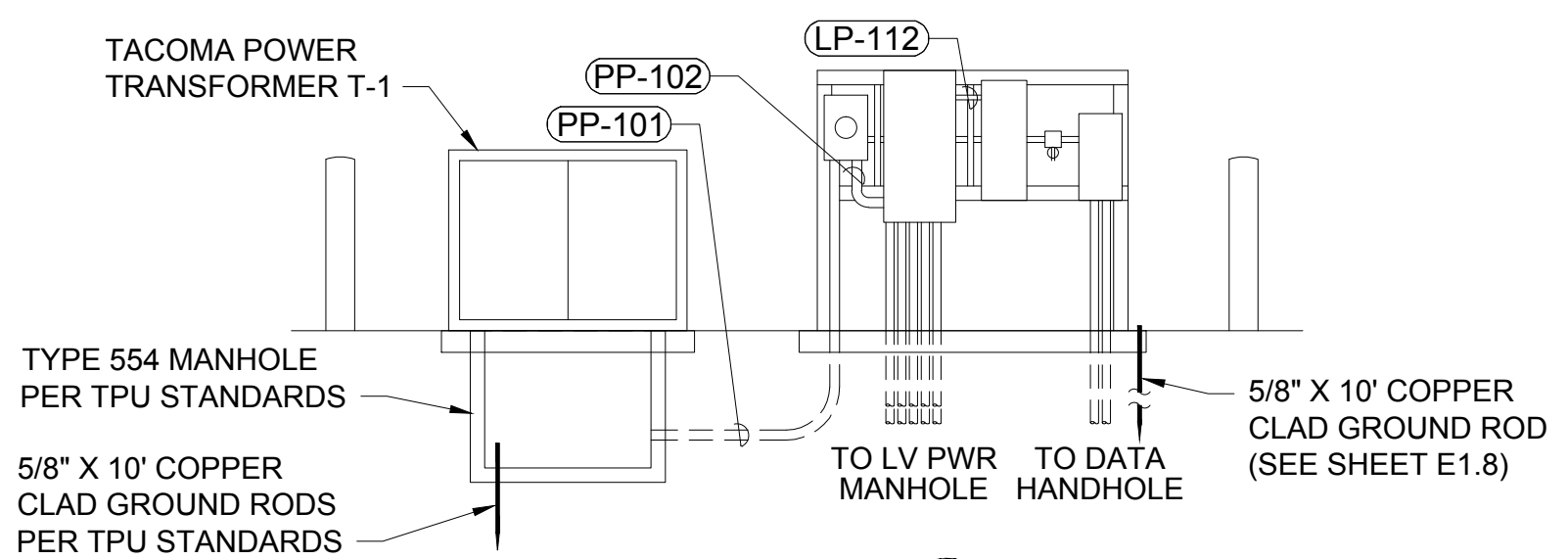


GENERAL NOTES

- 1. INCLUDE PULL ROPE IN ALL CONDUIT.
- 2. ALL CONDUIT BELOW GRADE SHALL BE SCHEDULE 80 PVC UNLESS OTHERWISE NOTED.
- 3. REFER TO SHEET E1.23 FOR CONDUIT AND CABLE SCHEDULE.
- 4. REFER TO TACOMA POWER STANDARDS FOR MEDIUM VOLTAGE INSTALLATIONS.
- 5. SEE ONE LINE DIAGRAM E1.16 FOR CONDUIT AND WIRE SIZES TO THIS EQUIPMENT.
- 6. SEE SHEET E1.8 FOR GROUNDING DETAILS..

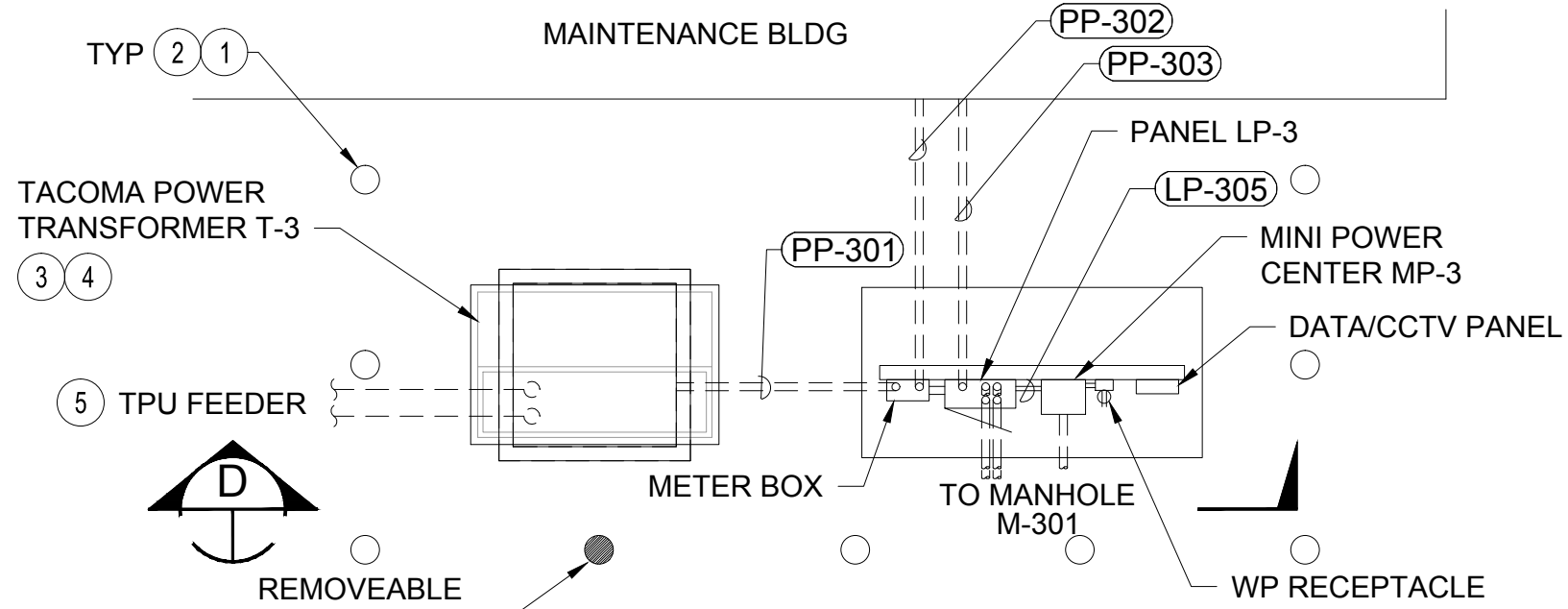


PLAN VIEW

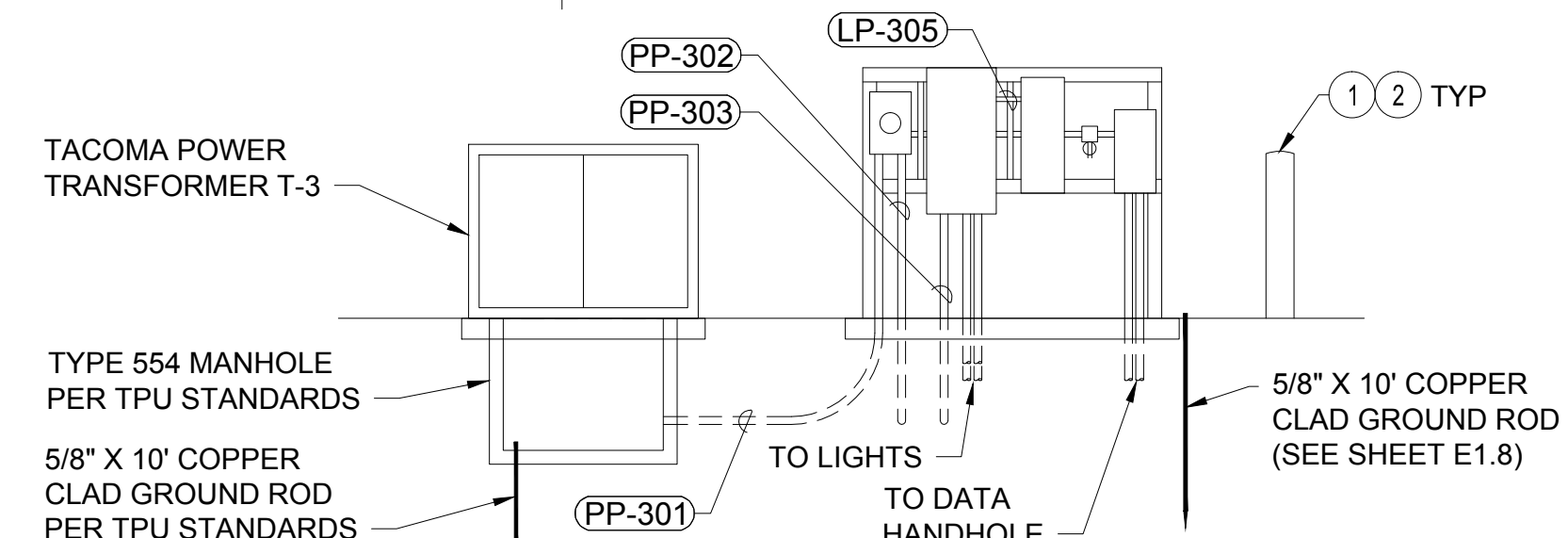


ELEVATION A

1 DETAIL - ELECTRICAL SERVICE #1
E1.1,E1.7 SCALE: 1/4"=1'-0" 0 4 8 scale feet

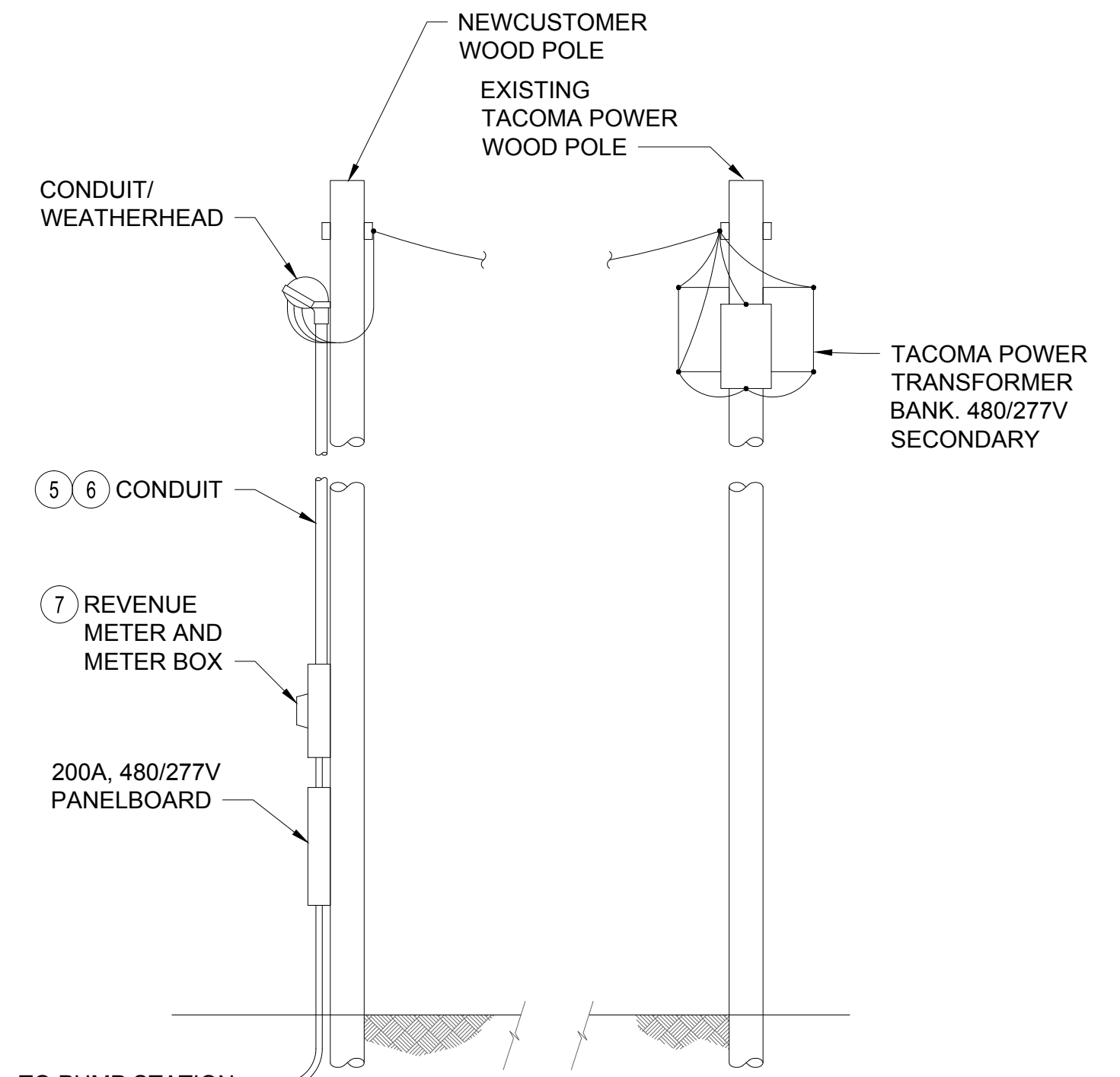


PLAN VIEW



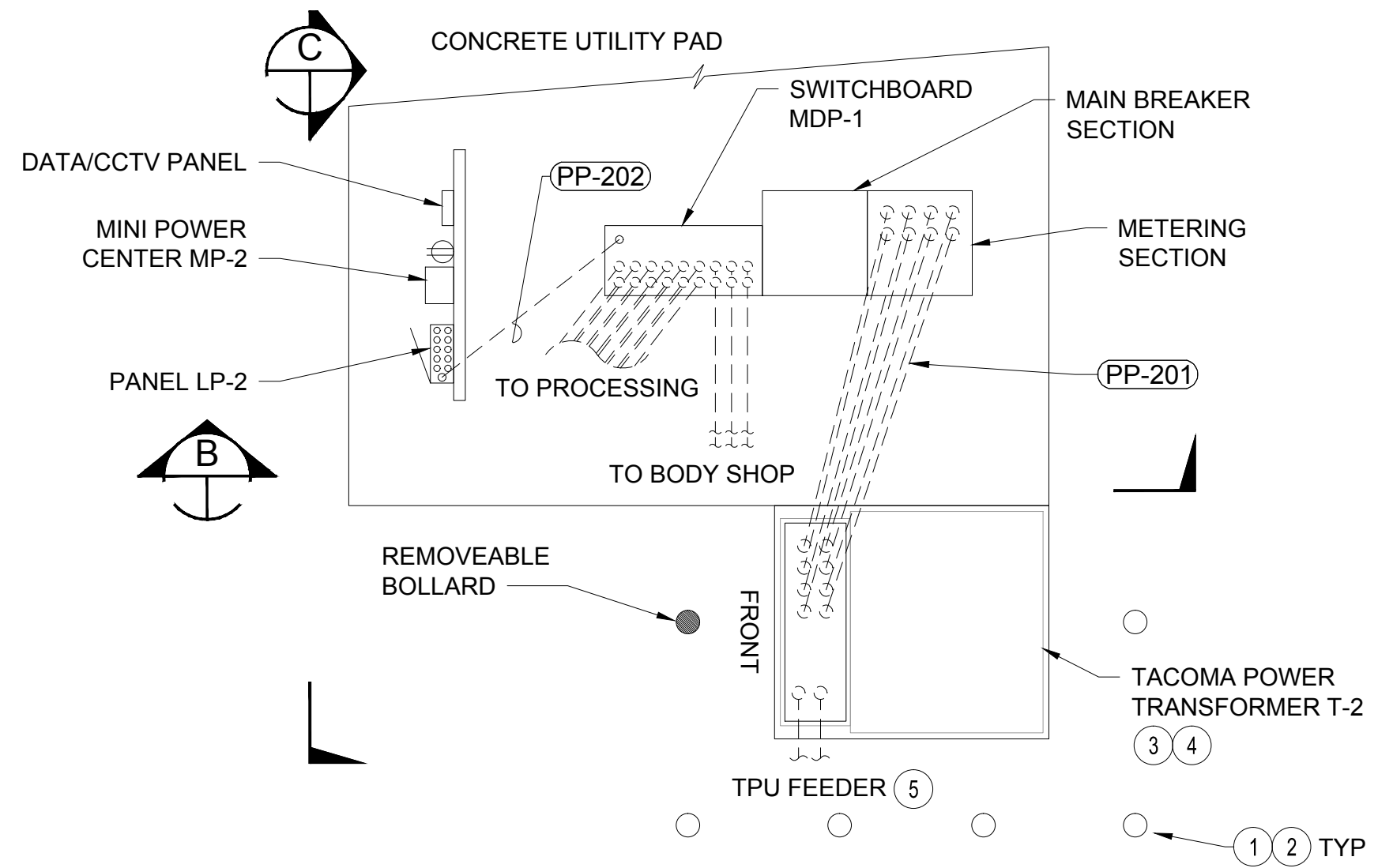
ELEVATION C

3 DETAIL - ELECTRICAL SERVICE #3
E1.1,E1.4 SCALE: 1/4"=1'-0" 0 4 8 scale feet

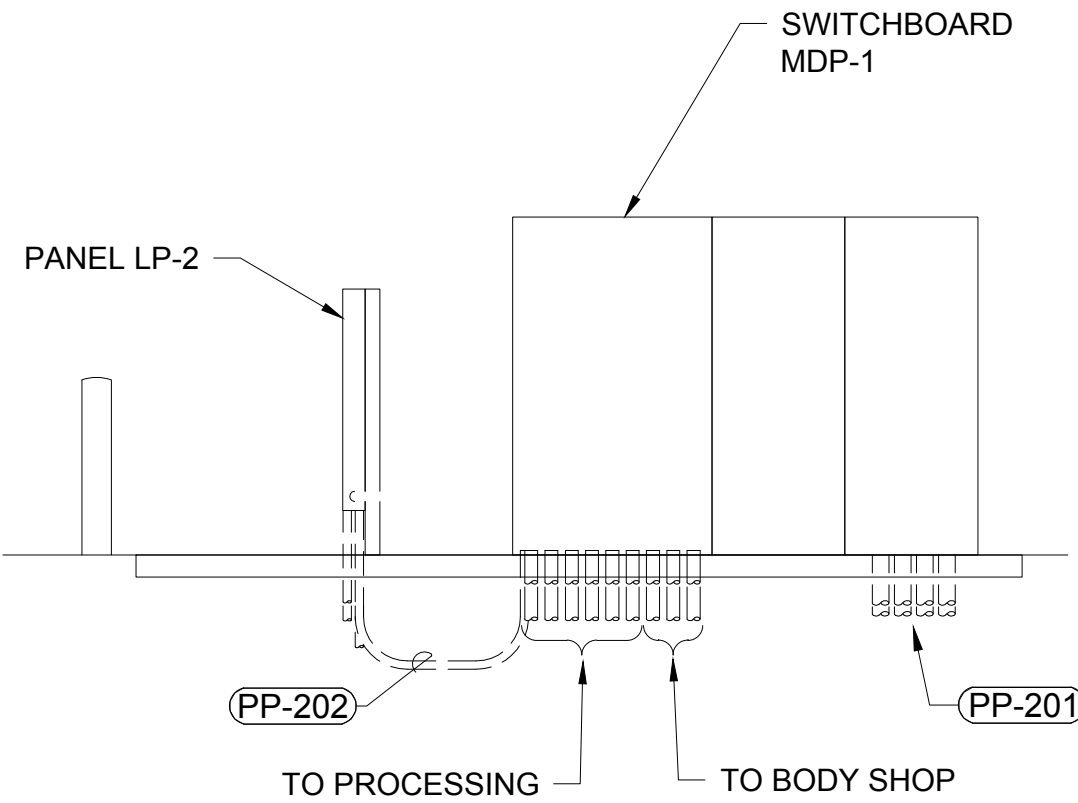


ELEVATION

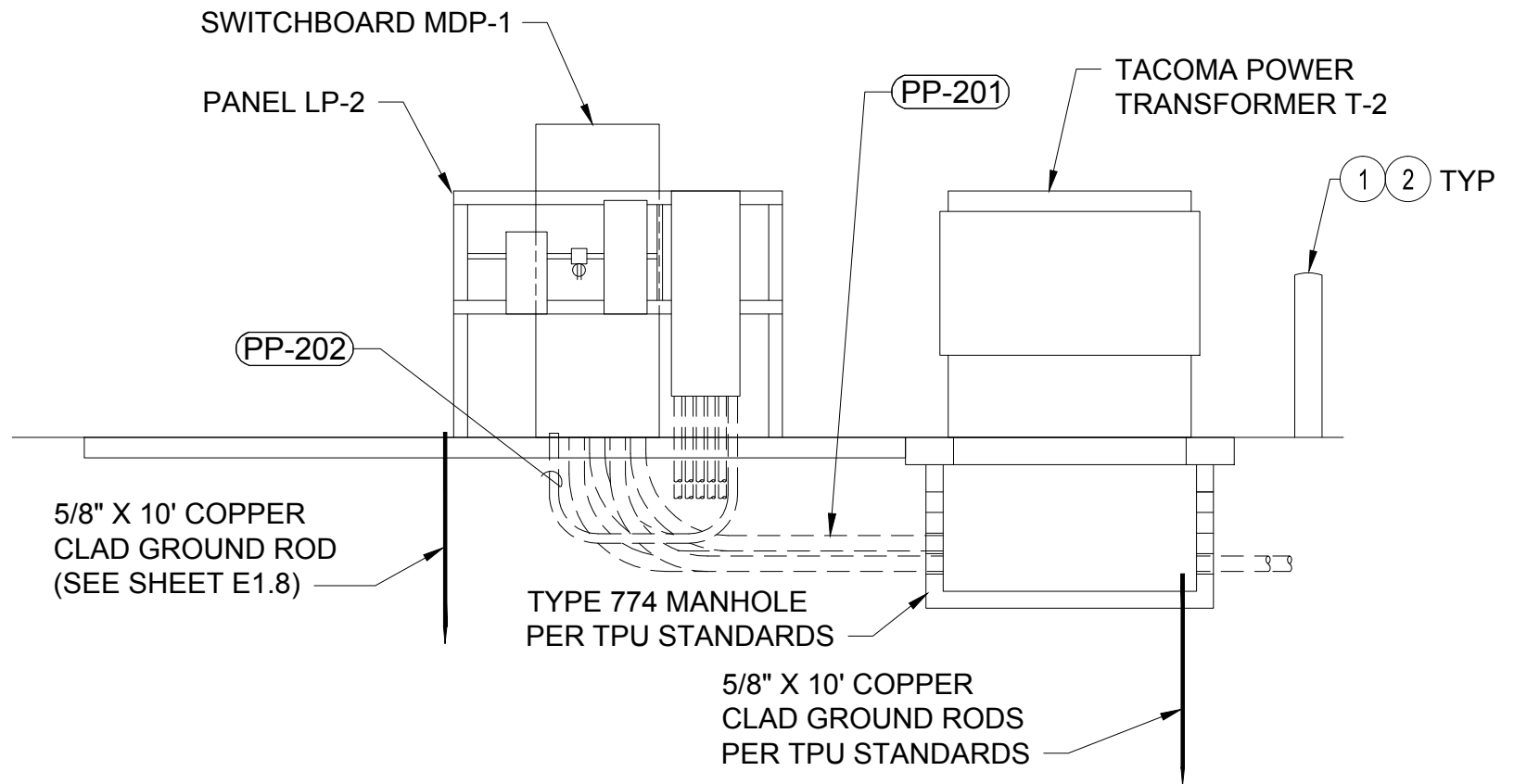
4 DETAIL - ELECTRICAL SERVICE #4
E1.1 SCALE: NONE



PLAN VIEW



ELEVATION B



ELEVATION C

2 DETAIL - ELECTRICAL SERVICE #2
E1.1,E1.3 SCALE: 1/4"=1'-0" 0 4 8 scale feet

ELECTRICAL NOTES

- 1 REFER TO CIVIL DRAWINGS FOR BOLLARD DETAILS.
- 2 REFER TO CIVIL DRAWINGS FOR BOLLARD SPACING AND LOCATIONS PER TACOMA POWER STANDARDS.
- 3 TRANSFORMER PROVIDED AND INSTALLED BY TACOMA POWER.
- 4 TRANSFORMER VAULT PROVIDED AND INSTALLED BY CONTRACTOR PER TACOMA POWER SERVICE STANDARDS.
- 5 TACOMA POWER FEEDER CABLES PROVIDED AND INSTALLED BY TACOMA POWER. CONDUIT PROVIDED AND INSTALLED BY CONTRACTOR.
- 6 INSTALL CONDUIT PER TACOMA POWER STANDARDS
- 7 CONTRACTOR SHALL PROVIDE AND INSTALL METER BOX. REVENUE METER PROVIDED BY TACOMA POWER.

2407 North 31st Street, Suite 100
Tacoma, Washington 98407
(253) 396-0150 Fax (253) 396-0162

DATE: _____
APPR: _____
BY: _____
REVISION: _____

5/9/18

DCR 5/7/18
CHECKED BY DATE

DKS 5/9/18
PROJ. ENGR DATE

PRINTED BY: Jeff May 09, 2018

PORT ADDRESS: ONE SITCUM PLAZA
TACOMA WA, 98401-1837

APPROVED: _____

PARCEL 77 AUTO IMPORT TERMINAL

E1.17
136 OF 163

ELECTRICAL DETAILS
SERVICE POINT PLANS

CONT/CONS: 070770

TOWNSHIP: 21N

RANGE: 3E

SECTION: 36

M. ID: 201020.01

DATE-HRZ: W83-SF

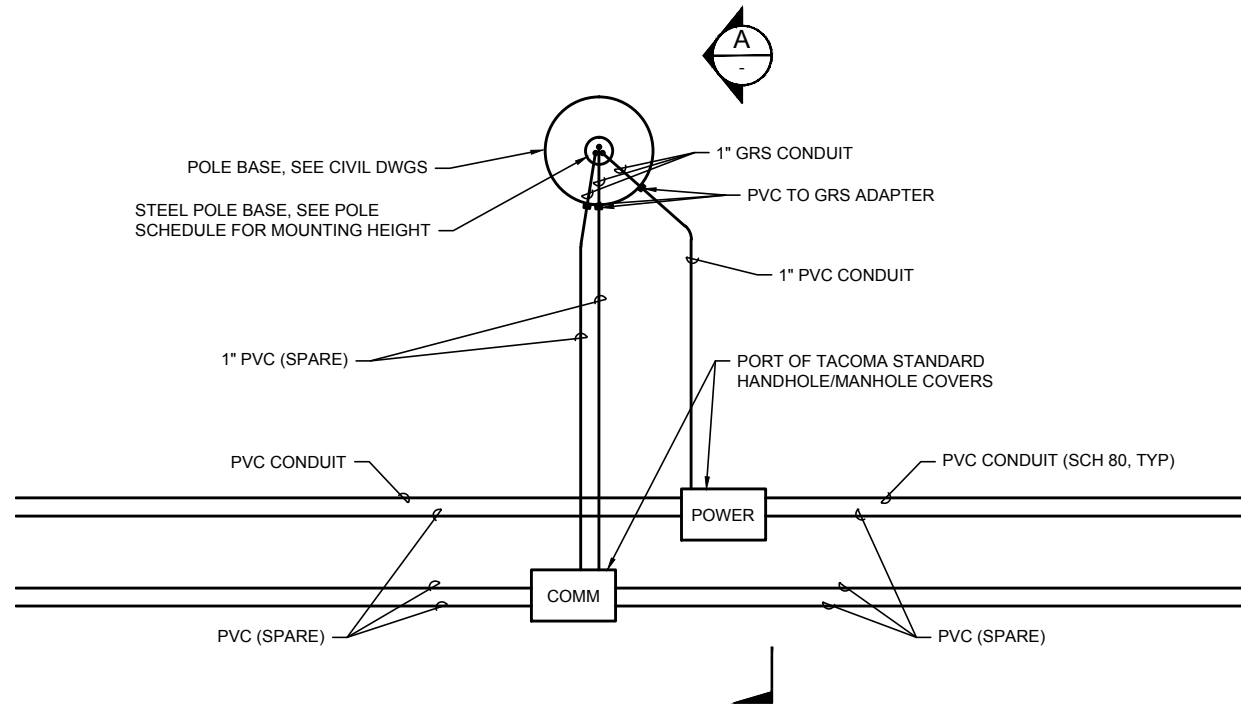
VERT: PORT OF TACOMA BM#

DRAWING SCALE: AS SHOWN

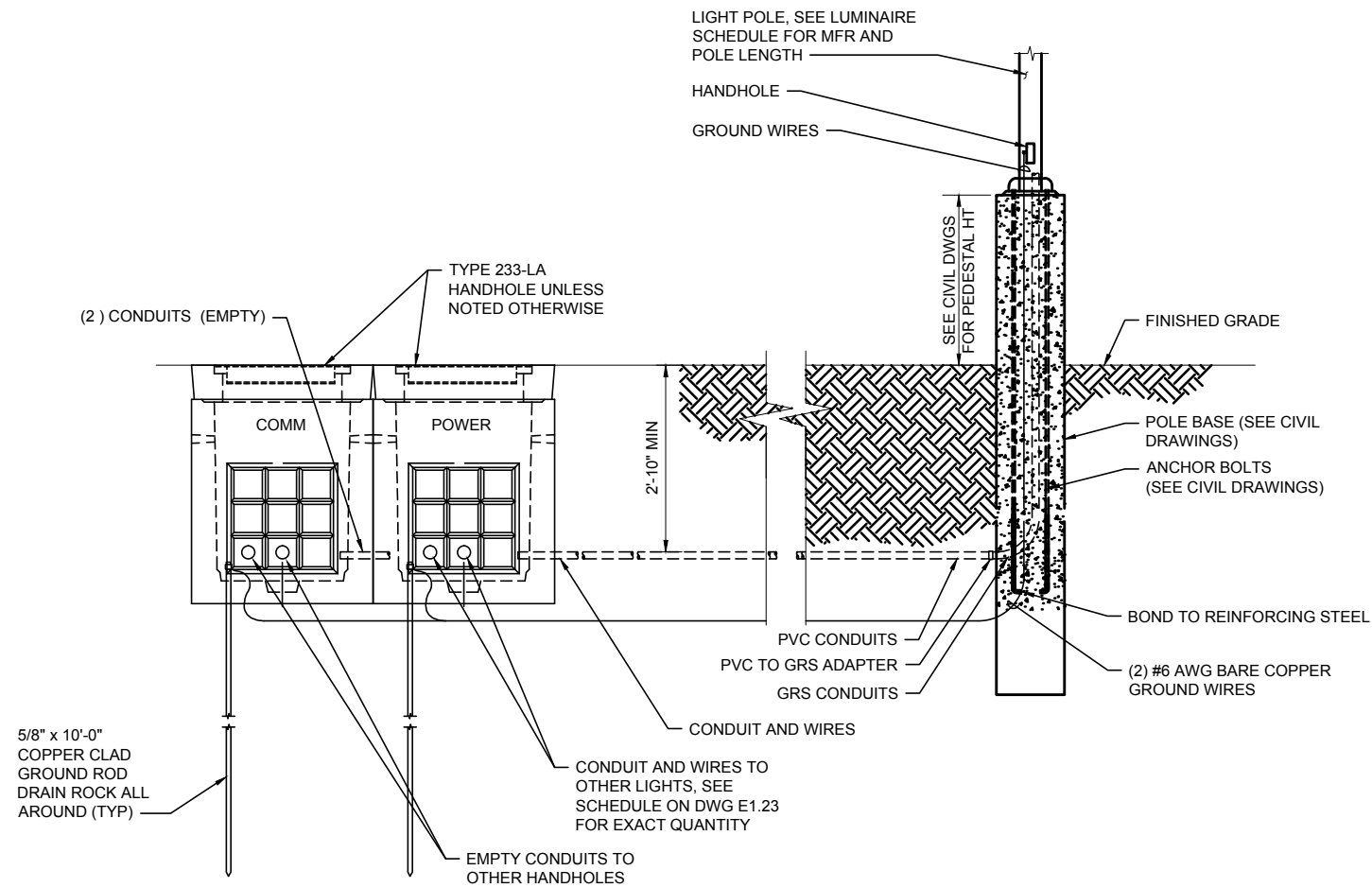
PHASE: PRELIMINARY

PARCEL: MULTIPLE

THIS DRAWING IS THE PROPERTY OF THE PORT OF TACOMA AND SHALL NOT BE USED ON OTHER WORK, DISCLOSED, COPIED, IN WHOLE OR IN PART, WITHOUT WRITTEN PERMISSION

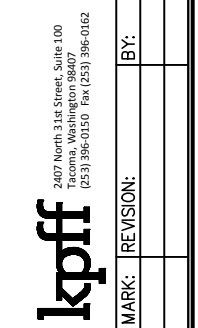
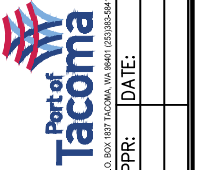


PLAN VIEW



SECTION

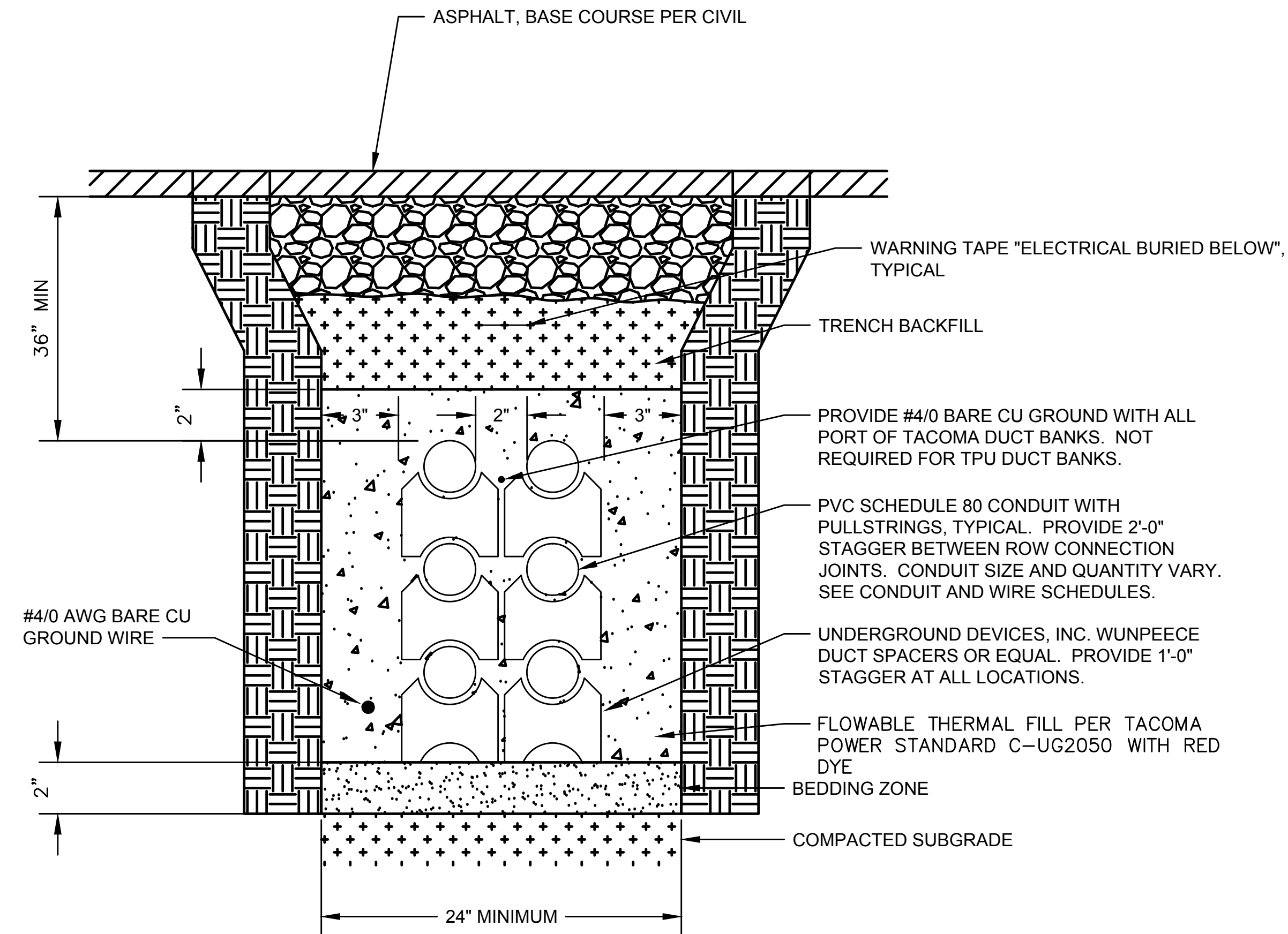
1 TYPICAL DETAIL - POLE HANDHOLES
SCALE: NONE



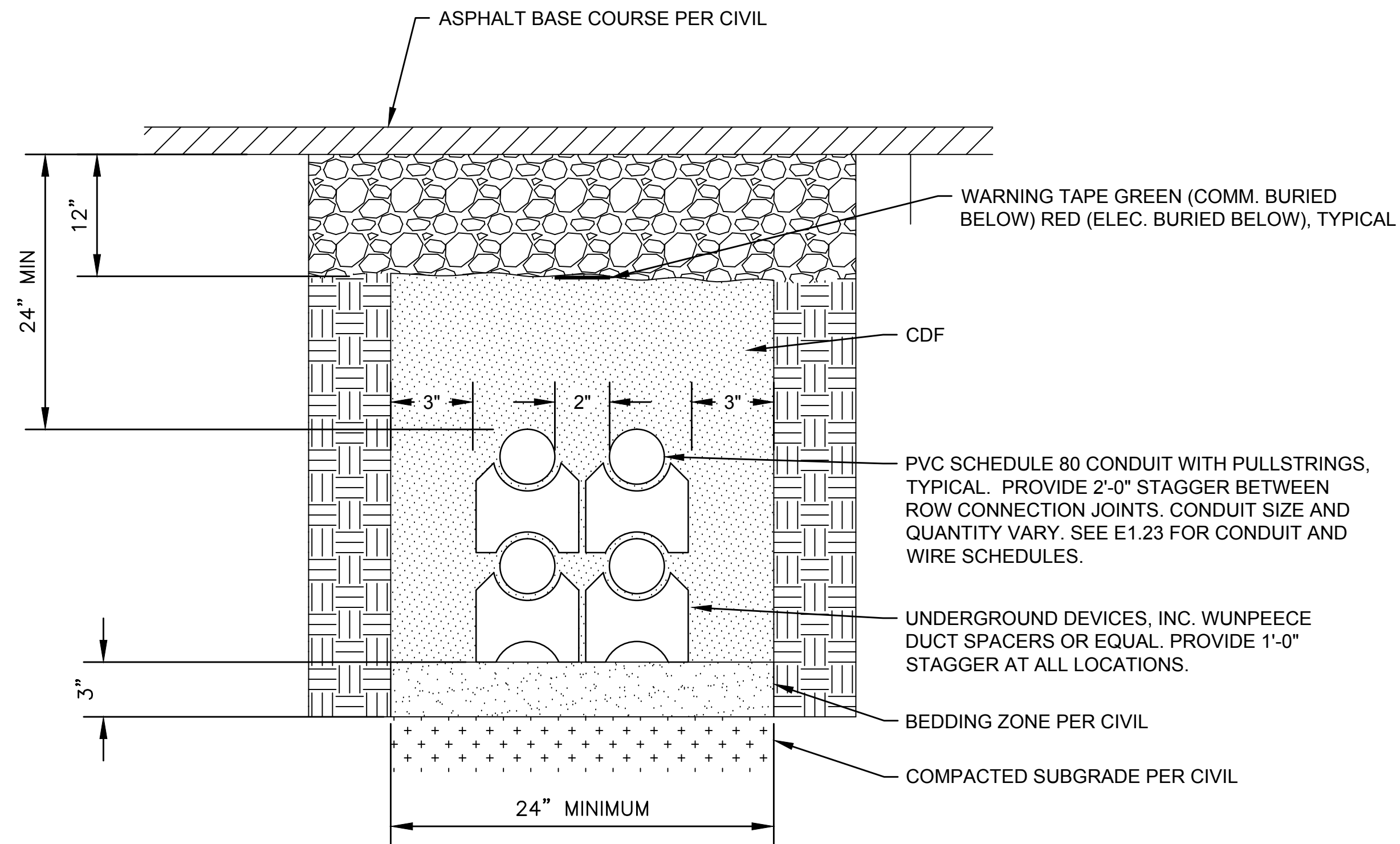
DCR	5/7/18
CHECKED BY	DATE
DKS	5/9/18
DIRECTOR ENG. DATE	PROJ. ENGR DATE
Jeff May 09, 2018	
PRINTED BY:	PORT ADDRESS: ONE SITCUM PLAZA
	TACOMA WA, 98401-1837

PARCEL 77 AUTO IMPORT TERMINAL			
ELECTRICAL DETAILS			
INSTALLATION DETAILS			
TOWNSHIP: 21N	RANGE: 3E	SECTION: 36	
DATE-HRZ: V83-SF	VERT: PORT OF TACOMA BM#		
PARCEL: MULTIPLE	DRAWING SCALE: AS SHOWN		

E1.18	137 OF 163
CONT/CONS: 070770	
M. ID: 201020.01	
PHASE: PRELIMINARY	



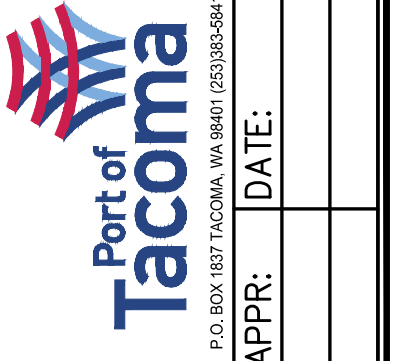
1 TYPICAL MV DUCTBANK CONSTRUCTION
SCALE: NONE



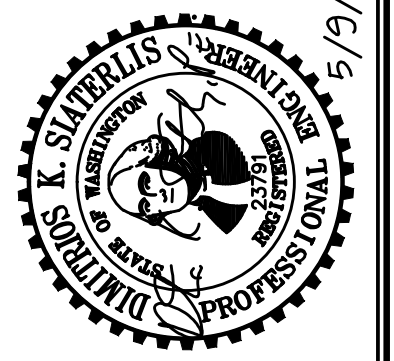
2 TYPICAL COMMUNICATIONS AND 600V DUCTBANK CONSTRUCTION
SCALE: NONE

GENERAL NOTES

1. INCLUDE PULL ROPE IN ALL CONDUIT.
2. ALL CONDUIT BELOW GRADE SHALL BE SCHEDULE 80 PVC UNLESS OTHERWISE NOTEDL.
3. REFER TO SHEET E1.23 FOR CONDUIT AND CABLE SCHEDULE.
4. INSTALL MEDIUM VOLTAGE DUCTBANKS PER TACOMA POWER STANDARD.



kpff
2407 North 31st Street, Suite 100
Tacoma, Washington 98407
(253) 396-0150 Fax (253) 396-0162



APPROVED:	DCR	5/7/18	DATE
	CHECKED BY:	DKS	5/9/18
	DIRECTOR ENGR. DATE:	Jeff May 09, 2018	DATE
	PRINTED BY:	kpff	DATE
	PORT ADDRESS: ONE SITCUM PLAZA		
	TACOMA WA, 98401-1837		

PARCEL 77 AUTO IMPORT TERMINAL			
ELECTRICAL DETAILS			
HANDHOLES AND DUCTBANKS			
TOWNSHIP: 21N	RANGE: 3E	SECTION: 36	
DATE-HRZ: W83-SF	VERT: PORT OF TACOMA BM#		
PARCEL: MULTIPLE	DRAWING SCALE: AS SHOWN		

E1.19	
138	OF 163
CONT/CONS: 070770	
M. ID: 201020.01	
PHASE: PRELIMINARY	

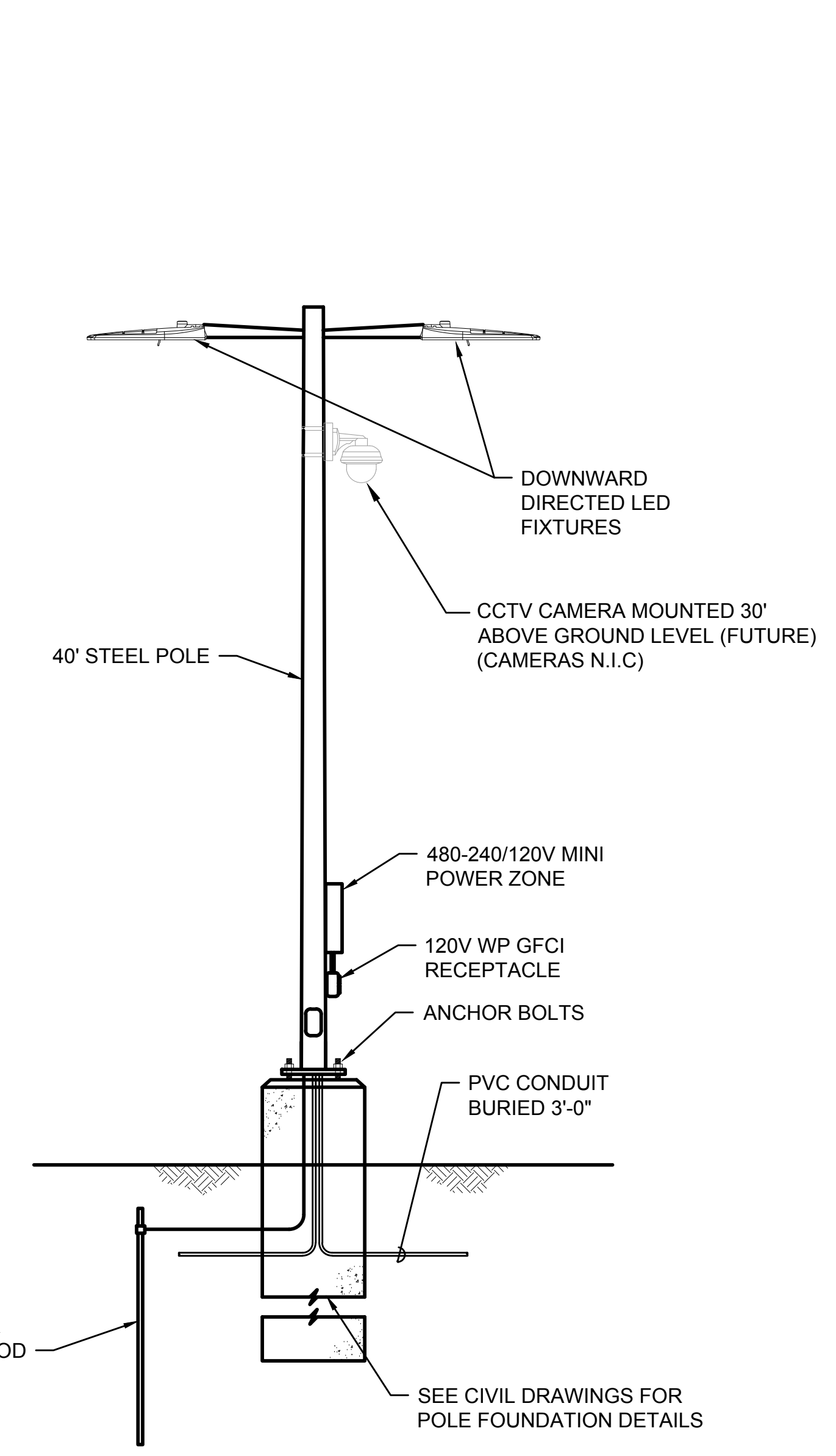
DCR	5/7/18
CHECKED BY	DATE
DKS	5/9/18
DIRECTOR ENGR. DATE	PROJ. ENGR DATE
Jeff May 09, 2018	
PRINTED BY:	PORT ADDRESS: ONE SITCUM PLAZA
	TACOMA WA, 98401-1837

APPROVED:			
PARCEL 77 AUTO IMPORT TERMINAL			
ELECTRICAL LIGHTING DETAILS			
LIGHT POLES			
TOWNSHIP: 21N	RANGE: 3E	SECTION: 36	
DATE: 201020.01	DATE: W83-SF	DATE: PORT OF TACOMA BM#	
PHASE: PRELIMINARY	PARCEL: MULTIPLE	DRAWING SCALE: AS SHOWN	

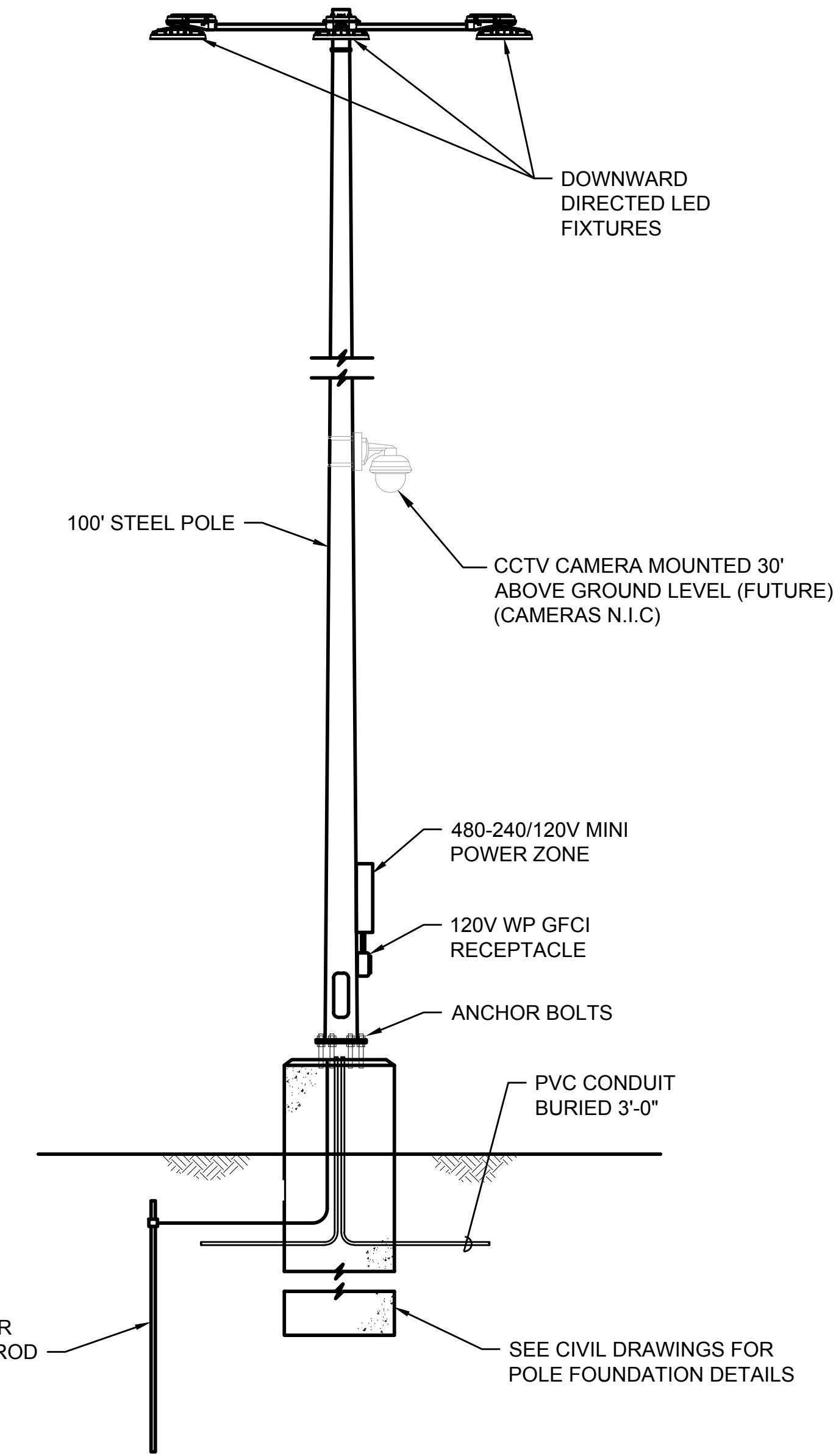
E1.20	
139	OF 163
CONT/CONS: 070770	
M. ID: 201020.01	
PHASE: PRELIMINARY	

GENERAL NOTES

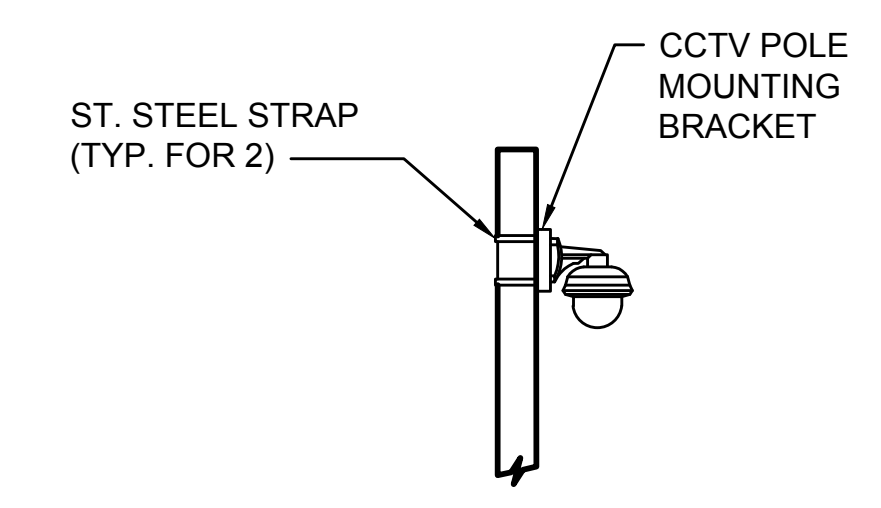
- REFER TO FIXTURE SCHEDULE, DWG E1.23, FOR FIXTURE TYPES AND QUANTITIES.
- LIGHTS AND POLES SHALL BE PROVIDED BY PORT OF TACOMA.



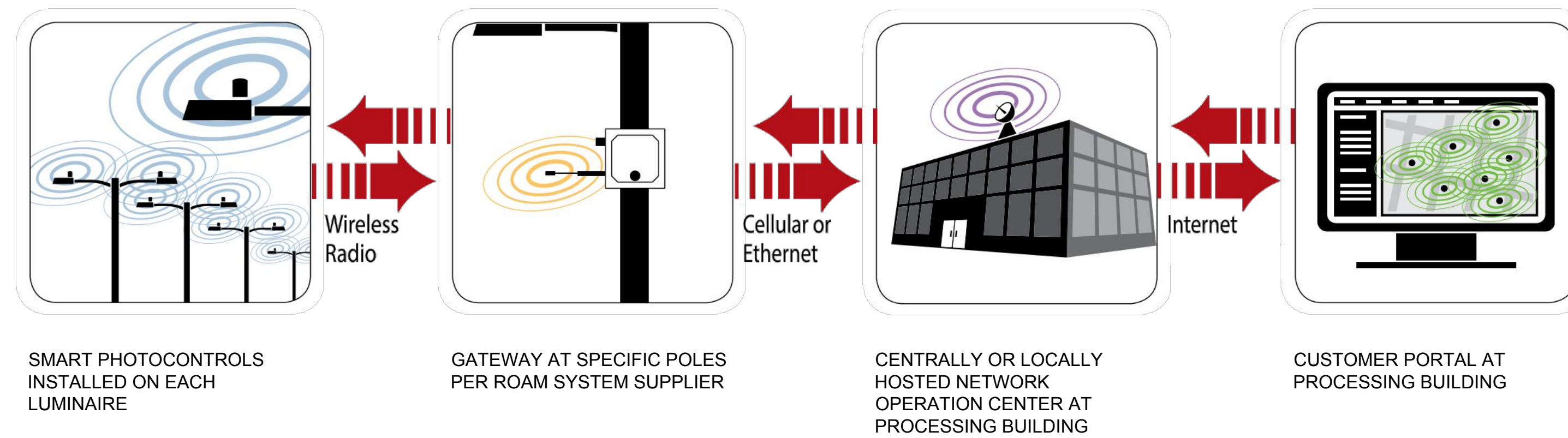
1 TYP. DETAIL - 40' PERIMETER LIGHT POLE
SCALE: NONE



2 TYP. DETAIL - 100' HI-MAST LIGHT POLE
SCALE: NONE

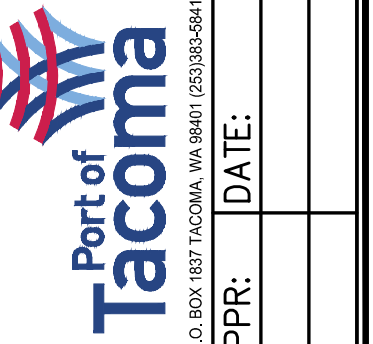


3 TYPICAL DETAIL CCTV CAMERA MOUNTING
SCALE: NONE
CAMERAS N.I.C.



GENERAL NOTES

- PERFORMANCE SPECS FOR LIGHTING CONTROL BY ACUITY BRANDS "ROAM" SYSTEM OR APPROVED EQUAL.
- FOR ALL AREAS INDICATED ON THE LIGHTING CONTROL SCHEDULE, DESIGN AND PROVIDE A COMPLETE AND FULLY FUNCTIONING LIGHTING CONTROL SYSTEM. EACH AREA SHALL INCLUDE SUFFICIENT QUANTITY OF CONTROL DEVICES, INCLUDING BUT NOT LIMITED TO SWITCHES, DIMMERS, PHOTOCELLS, CONTACTORS, TIMECLOCKS AND POWER PACKS, TO MEET ALL OF THE LIGHTING CONTROL SCHEDULE REQUIREMENTS.
- ALL LIGHTING CONTROL EQUIPMENT SHALL BE COMPLIANT WITH CURRENT WASHINGTON STATE ENERGY CODE (WSEC) REQUIREMENTS.
- ENSURE DIMMING FIXTURE'S DRIVER/POWER SUPPLY IS COMPATIBLE WITH LIGHTING CONTROL SYSTEM FOR OPTIMAL PERFORMANCE.
- ALL EQUIPMENT LOCATED OUTDOORS MUST BE RATED FOR 24 DEG F MINIMUM.



2407 North 31st Street, Suite 100
Tacoma, Washington 98407
(253) 396-0150 Fax (253) 396-0162

kpff



COMMISSIONING FOR LIGHTING CONTROLS

FOR LIGHTING CONTROLS THAT INCLUDE DAYLIGHT OR OCCUPANT SENSING AUTOMATIC CONTROLS, AUTOMATIC SHUT-OFF CONTROLS, OCCUPANCY SENSORS, OR AUTOMATIC TIME SWITCHES: THE LIGHTING CONTROLS SHALL BE TESTED, CALIBRATED AND ADJUSTED, SEQUENCES OF OPERATION SHALL BE TESTED TO ENSURE THAT THEY OPERATE IN ACCORD WITH SPECIFICATIONS AND APPROVED PLANS, AND A COMPLETE REPORT OF TEST PROCEDURES AND RESULTS SHALL BE FILED WITH THE OWNER IN ACCORDANCE WITH WASHINGTON STATE ENERGY CODE SECTIONS C103.6 AND C408. COMMISSIONING TO BE PERFORMED BY A QUALIFIED COMMISSIONING AUTHORITY.

DCR	5/7/18
CHECKED BY	DATE
DKS	5/9/18
DIRECTOR ENGR. DATE	PROJ. ENGR DATE
Jeff May 09, 2018	
PRINTED BY:	DATE
PORT ADDRESS: ONE SITCUM PLAZA	5/9/18
TACOMA WA, 98401-1837	

LIGHTING AND SWITCHED RECEPTACLES CONTROL SCHEDULE												
ROOM NO.	AREA BY CONDUIT TAG	PANEL CIRCUIT NO.	LOAD WATTS	OCCUPANT CONTROL		FIXTURE CONTROL TYPE	DAYLIGHT RESPONSIVE CONTROL			TIME BASED CONTROL		NOTES
				DEVICE	'ON' FUNCTION		AUTO DIMMING TYPE	DESIGN FC TARGET	INTEGRAL TO FIXTURE	PROVIDE	TIME SCHEDULE	
EXTERIOR	YARD											
	LP-101 (HM-9,-10,-11)	LP1 (2,4,6)	15,048	n/a	auto	0-10V	SD	10		Y	*	* PHOTOCONTROL ON/OFF DUSK TO DAWN, TIMECLOCK DIM TO 70% OF FULL LIGHT OUTPUT DURING NON-OPERATIONAL HOURS
	LP-102 (HM-12,-13)	LP1 (7,9,11)	7,524	n/a	auto	0-10V	SD	10		Y	*	
	LP-103 (P-1,-2,-3,-4,-5,-6,-7,-8,-9)	LP1(8,10,12)	5,805	n/a	auto	0-10V	SD	10		Y	*	
	LP-104 (P-10,-11,-12,-13,-31)	LP1(13,15,17)	3,225	n/a	auto	0-10V	SD	10		Y	*	
	LP-105 (P-25,-26,-27,-28,-29,-30)	LP1(14,16,18)	2,580	n/a	auto	0-10V	SD	10		Y	*	
	LP-201 (HM-1,-2)	LP2(1,3,5)	10,032	n/a	auto	0-10V	SD	10		Y	*	
	LP-202 (HM-3,-4)	LP2(2,4,6)	10,032	n/a	auto	0-10V	SD	10		Y	*	
	LP-203 (P-14,-15,-16,-17,-18,-19,-35)	LP2(7,9,11)	4,300	n/a	auto	0-10V	SD	10		Y	*	
	LP-204 (P-32,-33,-34,-36,-37,-38)	LP2(8,10,12)	2,795	n/a	auto	0-10V	SD	10		Y	*	
	LP-205 (HM-5,-6)	LP2(13,15,17)	10,032	n/a	auto	0-10V	SD	10		Y	*	
	LP-301 (HM-7,-8)	LP3(1,3,5)	10,032	n/a	auto	0-10V	SD	10		Y	*	
	LP-302 (LP-20,-21,-22,-23,-24,-39)	LP3(2,4,6)	3,225	n/a	auto	0-10V	SD	10		Y	*	
	LP-211 (4' BOLLARD LIGHTS)	LP2(35)	360	n/a	auto	0-10V	SD	10		Y	*	
LP-212 (4' BOLLARD LIGHTS)	LP2(37)	360	n/a	auto	0-10V	SD	10		Y	*		
LP-213 (4' BOLLARD LIGHTS)	LP2(39)	360	n/a	auto	0-10V	SD	10		Y	*		

LIGHTING CONTROLS LEGEND

- ND NON-DIMMING
- SD STEP-DIMMING (STEP-DIM DRIVER OR MULTIPLE DRIVERS)
- Y YES
- N NO
- N/A NOT APPLICABLE
- FC FOOTCANDLE

E1.21
140 OF 163

CONT/CONS: 070770
M. ID: 201020,01
PHASE: PRELIMINARY

PARCEL 77 AUTO IMPORT TERMINAL

ELECTRICAL LIGHTING DETAILS
LIGHTING CONTROLS

TOWNSHIP: 21N RANGE: 3E SECTION: 36
DATE-HRZ: W83-SF VERT: PORT OF TACOMA BM#
PARCEL: MULTIPLE DRAWING SCALE: AS SHOWN

PANELBOARD LP-1		225 A BUS	SECTIONS: 1				RACK MOUNTED		
480/ 277V 3 PHASE 4 WIRE		200 A MCB	LUGS: SINGLE		NEMA: 4X				
LOCATION: SW CORNER		22k AIC	FEED: BOTTOM		NUMBER OF POLES: 42				
CKT	TYPE	SERVES	C.B.	KVA CONNECTED	PHASE LOAD KVA	C.B.	SERVES	TYPE	CKT
1		SPARE	20 / 3		5.0	15.00	30 / 3	HM-9,-10,-11	LI 2
3			---		5.0		---	HIGH MAST LIGHTS	4
5			---		5.0		---		6
7	LI	HM-12,-13	20 / 3	10.00	5.3	5.80	20 / 3	P-1,-2,-3,-4,-5,-6,-7,-8,-9	LI 8
9		HIGH MAST LIGHTS	---		5.3		---	SITE LIGHTING	10
11			---		5.3		---		12
13	LI	P-10,-11,-12,-13,-31	20 / 3	3.20	1.9	2.60	20 / 3	P-25,-26,-27,-28,-29,-30	LI 14
15		SITE LIGHTING	---		1.9		---	SITE LIGHTING	16
17			---		1.9		---		18
19		SPARE	20 / 3		1.9	5.80	25 / 3	HM-9,-10,-11 POLE MTD RCPT	SF 20
21			---		1.9		---	MINI PWR ZONES, 3@5kVA	22
23			---		1.9		---	480V-120/240V, 1PH	24
25	SF	P-10,-12 POLE MTD RCPT	20 / 3	3.80	2.5	3.80	20 / 3	HM-12,-13 POLE MTD RCPT	SF 26
27		MINI PWR ZONES, 2@5kVA	---		2.5		---	MINI PWR ZONES, 2@5kVA	28
29		480V-120/240V, 1PH	---		2.5		---	480V-120/240V, 1PH	30
31	SF	P-4,-8,-9 POLE MTD RCPT	25 / 3	5.70	3.4	3.00	20 / 2	MINI PWR ZONE, 3kVA	SF 32
33		MINI PWR ZONES, 3@5kVA	---		3.4		---	(SUBSTATION)	34
35		480V-120/240V, 1PH	---		2.0	0.18	20 / 2	MINI PWR ZONE, 5kVA	SF 36
37			---		0.1		---	(HOTBOX HEATERS)	38
39			---		0.1	0.18	20 / 2	MINI PWR ZONE, 5kVA	SF 40
41			---		0.1		---	(HOTBOX HEATERS)	42
9 (21.4%) SPARES/SPACES				20.2	20.2	18.7	CALCULATED LOAD		68.2 KVA
				4.8% IMBALANCE		MAXIMUM AMPS PER PHASE		83.8 AMPS	

PANELBOARD LP-3		225 A BUS	SECTIONS: 1				RACK MOUNTED		
480/ 277V 3 PHASE 4 WIRE		100 A MCB	LUGS: SINGLE		NEMA: 4X				
LOCATION: SW CORNER		22k AIC	FEED: BOTTOM		NUMBER OF POLES: 30				
CKT	TYPE	SERVES	C.B.	KVA CONNECTED	PHASE LOAD KVA	C.B.	SERVES	TYPE	CKT
1	LI	HM-7,-8	20 / 3	10.00	4.4	3.23	20 / 3	P-20,-21,-22,-23,-24,-39	LI 2
3		HIGH MAST LIGHTS	---		4.4		---	SITE LIGHTING	4
5			---		4.4		---		6
7	SF	HM-7,-8 POLE MTD RCPT	20 / 3	3.80	1.9	1.90	20 / 3	P-23 POLE MTD RCPT	SF 8
9		MINI PWR ZONES, 2@5kVA	---		1.9		---	MINI PWR ZONE, 5kVA	10
11		480V-120/240V, 1PH	---		1.9		---	480V-120/240V, 1PH	12
13	SF	MINI POWER ZONE, 3kVA	20 / 2	3.00	1.5				14
15		(SUBSTATION)	---		1.5				16
17			---		0.0				18
19			---		0.0				20
21			---		0.0				22
23			---		0.0				24
25			---		0.0				26
27			---		0.0				28
29			---		0.0				30
16 (53.3%) SPARES/SPACES				7.8	7.8	6.3	CALCULATED LOAD		25.2 KVA
				13.7% IMBALANCE		MAXIMUM AMPS PER PHASE		32.2 AMPS	

PANELBOARD LP-2		225 A BUS	SECTIONS: 1				RACK MOUNTED		
480/ 277V 3 PHASE 4 WIRE		200 A MCB	LUGS: SINGLE		NEMA: 4X				
LOCATION: CENTRAL COMPLEX		22k AIC	FEED: BOTTOM		NUMBER OF POLES: 42				
CKT	TYPE	SERVES	C.B.	KVA CONNECTED	PHASE LOAD KVA	C.B.	SERVES	TYPE	CKT
1	LI	HM-1,-2	20 / 3	10.00	6.7	10.00	20 / 3	HM-3,-4	LI 2
3		HIGH MAST LIGHTS	---		6.7		---	HIGH MAST LIGHTS	4
5			---		6.7		---		6
7	LI	P-14,-15,-16,-17,-18,-19,-35	20 / 3	4.30	2.3	2.60	20 / 3	P-32,-33,-34,-36,-37,-38	LI 8
9		SITE LIGHTING	---		2.3		---	SITE LIGHTING	10
11			---		2.3		---		12
13	LI	HM-5,-6	20 / 3	10.00	5.6	6.82	50 / 3	GUARD HOUSE (NE)	SF 14
15		HIGH MAST LIGHTS	---		5.6		---	TRANSFORMER 30KVA	16
17			---		5.6		---		18
19	SF	P-14,-19 POLE MTD RCPT	20 / 3	3.80	2.5	3.80	20 / 3	HM-1,-2 POLE MTD RCPT	SF 20
21		MINI PWR ZONES, 2@5kVA	---		2.5		---	MINI PWR ZONES, 2@5kVA	22
23		480V-120/240V, 1PH	---		2.5		---	480V-120/240V, 1PH	24
25	SF	HM-3,-4 POLE MTD RCPT	20 / 3	3.80	2.5	3.80	20 / 3	HM-5,-6 POLE MTD RCPT	SF 26
27		MINI PWR ZONES, 2@5kVA	---		2.5		---	MINI PWR ZONES, 2@5kVA	28
29		480V-120/240V, 1PH	---		2.5		---	480V-120/240V, 1PH	30
31	SF	MINI PWR ZONE, 3kVA	20 / 2	3.00	1.5				32
33		(SUBSTATION)	---		1.5				34
35	LI	PEDESTRIAN LIGHTS	20 / 1	0.47	0.5				36
37	LI	PEDESTRIAN LIGHTS	20 / 1	0.47	0.5				38
39	LI	PEDESTRIAN LIGHTS	20 / 1	0.47	0.5				40
41			---		0.0				42
7 (16.7%) SPARES/SPACES				21.6	21.6	20.1	CALCULATED LOAD		72.9 KVA
				4.7% IMBALANCE		MAXIMUM AMPS PER PHASE		89.5 AMPS	

PANELBOARD LIFT STATION		225 A BUS	SECTIONS: 1				RACK MOUNTED		
480/ 277V 3 PHASE 4 WIRE		200 A MCB	LUGS: SINGLE		NEMA: 4X				
LOCATION: W OF ALEXANDER		22k AIC	FEED: TOP		NUMBER OF POLES: 24				
CKT	TYPE	SERVES	C.B.	KVA CONNECTED	PHASE LOAD KVA	C.B.	SERVES	TYPE	CKT
1	SF	LIFT STATION PANEL	80 / 3	50.00	16.7		80 / 3	SPARE	2
3			---		16.7		---		4
5			---		16.7		---		6
7		SPARE	30 / 3		0.0		20 / 3	SPARE	8
9			---		0.0		---		10
11			---		0.0		---		12
13			---		0.0		---		14
15			---		0.0		---		16
17			---		0.0		---		18
19			---		0.0		---		20
21			---		0.0		---		22
23			---		0.0		---		24
21 (87.5%) SPARES/SPACES				16.7	16.7	16.7	CALCULATED LOAD		50.0 KVA
				0.0% IMBALANCE		MAXIMUM AMPS PER PHASE		60.2 AMPS	



2407 North 31st Street, Suite 100
Tacoma, Washington 98407
(253) 396-0150 Fax (253) 396-0162



DCR 5/7/18

CHECKED BY DATE

DKS 5/9/18

PROJ. ENGR DATE

PRINTED BY: Jeff May 09, 2018

PORT ADDRESS: ONE SITCUM PLAZA
TACOMA WA, 98401-1837

APPROVED:

REVISION:

MARK:

BY:

DATE:

E1.22

141 OF 163

CONT/CONS: 070770

M. ID: 201020.01

PHASE: PRELIMINARY

PARCEL 77 AUTO IMPORT TERMINAL

ELECTRICAL

PANEL SCHEDULES

RANGE: 3E SECTION: 36

TOWNSHIP: 21N PORT OF TACOMA BM#

DATE-HRZ: W83-SF VERT: MULTIPLE

PARCEL: DRAWING SCALE: AS SHOWN

THIS DRAWING IS THE PROPERTY OF THE PORT OF TACOMA AND SHALL NOT BE USED ON OTHER WORK, DISCLOSED, COPIED, IN WHOLE OR IN PART, WITHOUT WRITTEN PERMISSION

POWER MANHOLE SCHEDULE				
NUMBER	SIZE/TYPE	MFR*	PLAN SHT	COMMENTS
M-001	554-LA	UV	E1.1	TPU FEEDERS 1 & 2 SPLICE
M-002	554-LA	UV	E1.1	
M-003	774-LA	UV	E1.1	TPU TRANSFORMER VAULT TP-2
M-004	554-LA	UV	E1.1	TPU TRANSFORMER VAULT TP-1
M-005	554-LA	UV	E1.1	TPU TRANSFORMER VAULT TP-3
M-006	554-LA	UV	E1.1	
M-101	554-LA	UV	E1.7	
M-102	554-LA	UV	E1.7	
M-103	444-LA	UV	E1.7	
M-104	444-LA	UV	E1.7	
M-105	444-LA	UV	E1.7	
M-106	444-LA	UV	E1.7	
M-107	444-LA	UV	E1.7	
M-108	444-LA	UV	E1.6	
M-201	444-LA	UV	E1.3	
M-202	554-LA	UV	E1.3	
M-203	554-LA	UV	E1.3	
M-204	554-LA	UV	E1.3	
M-205	444-LA	UV	E1.3	
M-206	444-LA	UV	E1.3	
M-207	444-LA	UV	E1.3	
M-208	444-LA	UV	E1.3	
M-301	554-LA	UV	E1.4	
H-101	233-LA	UV	E1.7	
H-102	233-LA	UV	E1.5	
H-103	233-LA	UV	E1.5	
H-104	233-LA	UV	E1.5	
H-105	233-LA	UV	E1.5	
H-106	233-LA	UV	E1.4	
H-107	233-LA	UV	E1.7	
H-108	233-LA	UV	E1.5	
H-109	233-LA	UV	E1.5	
H-110	233-LA	UV	E1.7	
H-111	233-LA	UV	E1.7	
H-112	233-LA	UV	E1.7	
H-113	233-LA	UV	E1.7	
H-114	233-LA	UV	E1.7	
H-115	233-LA	UV	E1.7	
H-116	233-LA	UV	E1.6	
H-117	233-LA	UV	E1.3	
H-118	233-LA	UV	E1.3	
H-119	233-LA	UV	E1.5	
H-120	233-LA	UV	E1.5	
H-121	233-LA	UV	E1.4	
H-122	233-LA	UV	E1.4	
H-123	233-LA	UV	E1.5	
H-124	233-LA	UV	E1.5	
H-125	233-LA	UV	E1.4	
H-126	233-LA	UV	E1.5	
H-127	233-LA	UV	E1.5	
H-128	233-LA	UV	E1.4	
H-201	233-LA	UV	E1.3	
H-202	233-LA	UV	E1.6	
H-203	233-LA	UV	E1.3	
H-204	233-LA	UV	E1.3	
H-205	233-LA	UV	E1.2	
H-206	233-LA	UV	E1.2	
H-207	233-LA	UV	E1.2	
H-208	233-LA	UV	E1.3	
H-209	233-LA	UV	E1.2	
H-210	233-LA	UV	E1.2	
H-211	233-LA	UV	E1.2	
H-212	233-LA	UV	E1.2	
H-213	233-LA	UV	E1.2	
H-214	233-LA	UV	E1.3	
H-215	233-LA	UV	E1.3	
H-216	233-LA	UV	E1.3	
H-217	233-LA	UV	E1.3	
H-301	233-LA	UV	E1.4	
H-302	233-LA	UV	E1.4	
H-303	444-LA	UV	E1.4	
H-304	233-LA	UV	E1.4	
H-305	233-LA	UV	E1.4	
H-306	233-LA	UV	E1.2	
H-307	233-LA	UV	E1.2	
H-308	233-LA	UV	E1.4	

* OR APPROVED EQUAL

DATA MANHOLE SCHEDULE				
NUMBER	SIZE/TYPE	MFR*	PLAN SHT	COMMENTS
DH-101	233-LA	UV	E1.11	
DH-102	233-LA	UV	E1.11	
DH-103	233-LA	UV	E1.11	
DH-104	233-LA	UV	E1.11	
DH-105	233-LA	UV	E1.11	
DH-106	233-LA	UV	E1.10	
DH-107	233-LA	UV	E1.10	
DH-108	233-LA	UV	E1.10	
DH-109	233-LA	UV	E1.10	
DH-110	233-LA	UV	E1.11	
DH-111	233-LA	UV	E1.11	
DH-112	233-LA	UV	E1.11	
DH-113	233-LA	UV	E1.14	
DH-114	233-LA	UV	E1.14	
DH-115	233-LA	UV	E1.15	
DH-116	233-LA	UV	E1.15	
DH-117	233-LA	UV	E1.11	
DH-118	233-LA	UV	E1.10	
DH-119	233-LA	UV	E1.10	
DH-120	233-LA	UV	E1.13	
DH-121	233-LA	UV	E1.13	
DH-122	233-LA	UV	E1.15	
DH-123	233-LA	UV	E1.15	
DH-124	233-LA	UV	E1.15	
DH-125	233-LA	UV	E1.15	
DH-126	233-LA	UV	E1.15	
DH-127	233-LA	UV	E1.13	
DH-128	233-LA	UV	E1.12	
DH-129	233-LA	UV	E1.15	
DH-130	233-LA	UV	E1.15	
DH-131	233-LA	UV	E1.12	
DH-132	233-LA	UV	E1.12	
DH-133	233-LA	UV	E1.12	
DH-134	233-LA	UV	E1.12	
DH-135	233-LA	UV	E1.12	
DH-136	233-LA	UV	E1.10	
DH-137	233-LA	UV	E1.13	
DH-138	233-LA	UV	E1.14	
DH-139	233-LA	UV	E1.15	
DH-140	233-LA	UV	E1.13	

* OR APPROVED EQUAL

E1.24
143 OF 163

CONT/CONS: 070770
M. ID: 201020.01
PHASE: PRELIMINARY

PARCEL 77 AUTO IMPORT TERMINAL

ELECTRICAL
MANHOLE SCHEDULES

TOWNSHIP: 21N RANGE: 3E SECTION: 36
DATE-HRZ: W83-SF VERT: PORT OF TACOMA BM#
PARCEL: MULTIPLE DRAWING SCALE: AS SHOWN

APPROVED:

DCR 5/7/18

CHECKED BY DATE

DKS 5/9/18

PROJ. ENGR DATE

PRINTED BY: Jeff May 09, 2018

PORT ADDRESS: ONE SITCUM PLAZA
TACOMA WA, 98401-1837



kpff

2407 North 31st Street, Suite 100
Tacoma, Washington 98407
(253) 396-0150 Fax (253) 396-0162



DATE:

APPR:

BY:

REVISION:

MARK: